

PACO25352

Product Information

Size:

50ug

Reactivity:

Human

Source:

Rabbit

Isotype:

IgG

Applications:

ELISA, IHC

Recommended dilutions:

ELISA:1:2000-1:10000, IHC:1:20-1:200

Protein Background:

Plays a role in cilia formation and/or maintenance. Plays a role in the regulation of cell morphology and cytoskeletal organization. Involved in DNA damage repair.

Gene ID:

CFAP410

Uniprot

O43822

Synonyms:

Cilia- and flagella-associated protein 410 (C21orf-HUMF09G8.5) (Leucine-rich repeat-containing protein 76) (YF5/A2), CFAP410, C21orf2, LRRC76

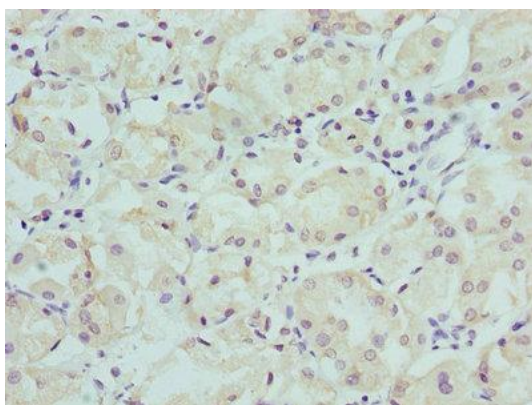
Immunogen:

Recombinant Human Cilia- and flagella-associated protein 410 protein (1-200AA).

Storage:

Preservative: 0.03% Proclin 300. Constituents: 50% Glycerol, 0.01M PBS, PH 7.4

Product Images



Immunohistochemistry of paraffin-embedded human gastric cancer using PACO25352 at dilution of 1:100.