

# C1QTNF3 Antibody



PACO25344

---

## Product Information

**Size:**

50ug

**Reactivity:**

Human

**Source:**

Rabbit

**Isotype:**

IgG

**Applications:**

ELISA, IHC

**Recommended dilutions:**

ELISA:1:2000-1:10000, IHC:1:20-1:200

**Protein Background:**

C1QTNF3 is a secretory protein produced by chondrogenic precursors & proliferating chondrocytes, and belongs to a novel C1q family of proteins.

**Gene ID:**

C1QTNF3

**Uniprot**

Q9BXJ4

**Synonyms:**

Complement C1q tumor necrosis factor-related protein 3 (Collagenous repeat-containing sequence 26 kDa protein) (CORS26) (Secretory protein CORS26), C1QTNF3, CTRP3

**Immunogen:**

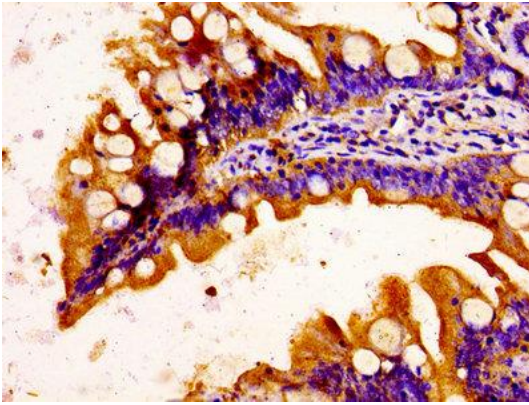
Recombinant Human Complement C1q tumor necrosis factor-related protein 3 protein (23-246AA).

**Storage:**

Preservative: 0.03% Proclin 300. Constituents: 50% Glycerol, 0.01M PBS, PH 7.4

## Product Images

---



IHC image of PACO25344 diluted at 1:100 and staining in paraffin-embedded human small intestine tissue performed on a Leica Bond™ system. After dewaxing and hydration, antigen retrieval was mediated by high pressure in a citrate buffer (pH 6.0). Section was blocked with 10% normal goat serum 30min at RT. Then primary antibody (1% BSA) was incubated at 4°C overnight. The primary is detected by a biotinylated secondary antibody and visualized using an HRP conjugated SP system.