

RAB1A Antibody



PACO25320

Product Information

Size:

50ug

Reactivity:

Human

Source:

Rabbit

Isotype:

IgG

Applications:

ELISA, WB

Recommended dilutions:

ELISA:1:2000-1:10000, WB:1:1000-1:5000

Protein Background:

Probably required for transit of protein from the ER through Golgi compartment. Binds GTP and GDP and possesses intrinsic GTPase activity.

Gene ID:

RAB1A

Uniprot

P62820

Synonyms:

Ras-related protein Rab-1A (YPT1-related protein), RAB1A, RAB1

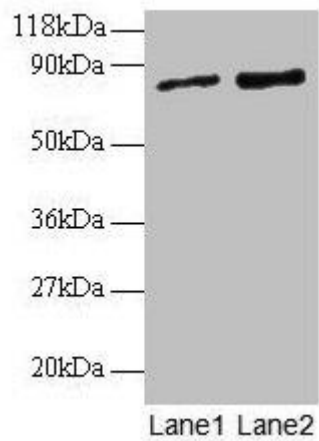
Immunogen:

Recombinant Human Ras-related protein Rab-1A protein (2-205AA).

Storage:

Preservative: 0.03% Proclin 300. Constituents: 50% Glycerol, 0.01M PBS, PH 7.4

Product Images



Western blot

All lanes: RAB1A antibody at 2 μ g/ml

Lane 1: EC109 whole cell lysate

Lane 2: 293T whole cell lysate

Secondary

Goat polyclonal to rabbit IgG at 1/15000 dilution

Predicted band size: 23, 16, 14 kDa

Observed band size: 80 kDa