

PACO25256

Product Information

Size:

50ug

Reactivity:

Human

Source:

Rabbit

Isotype:

IgG

Applications:

ELISA, IHC, IF

Recommended dilutions:

ELISA:1:2000-1:10000, IHC:1:20-1:200,
IF:1:50-1:200

Protein Background:

May be involved in collagen fiber assembly.

Gene ID:

BGN

Uniprot

P21810

Synonyms:

Biglycan (Bone/cartilage proteoglycan I) (PG-S1), BGN, SLRR1A

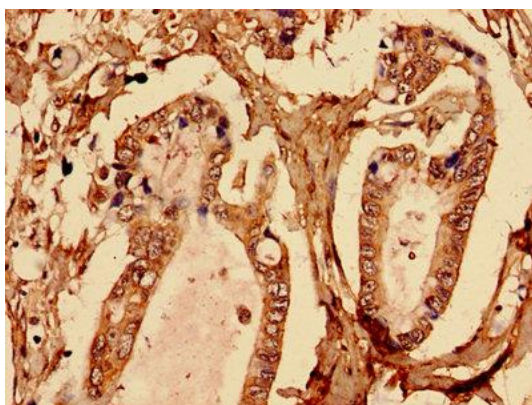
Immunogen:

Recombinant Human Biglycan protein (38-300AA).

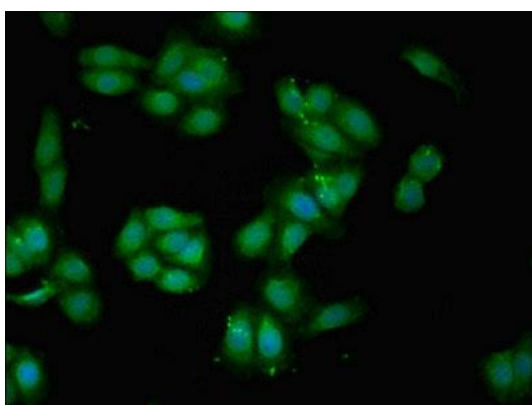
Storage:

Preservative: 0.03% Proclin 300. Constituents: 50% Glycerol, 0.01M PBS, PH 7.4

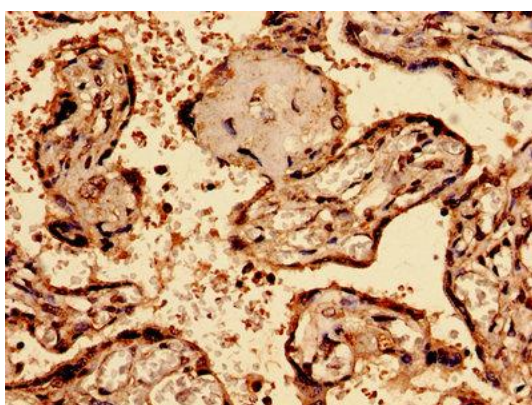
Product Images



Immunohistochemistry analysis of human pancreatic cancer using PACO25256 at dilution of 1:100.



Immunofluorescent analysis of HepG2 cells using PACO25256 at dilution of 1:100 and Alexa Fluor 488-conjugated AffiniPure Goat Anti-Rabbit IgG(H+L).



Immunohistochemistry analysis of human placenta tissue using PACO25256 at dilution of 1:100.