

PACO25224

Product Information

Size:

50ug

Reactivity:

Dog

Source:

Rabbit

Isotype:

IgG

Applications:

ELISA, IHC

Recommended dilutions:

ELISA:1:2000-1:10000, IHC:1:20-1:200

Protein Background:

Esterase with broad substrate specificity. Contributes to the inactivation of the neurotransmitter acetylcholine. Can degrade neurotoxic organophosphate esters.

Gene ID:

BCHE

Uniprot

P32750

Synonyms:

Cholinesterase (EC 3.1.1.8) (Acylocholine acylhydrolase) (Butyrylcholine esterase) (Choline esterase II) (Pseudocholinesterase) (Fragment), BCHE

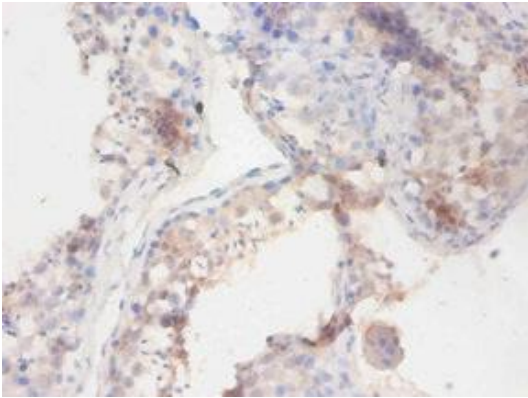
Immunogen:

Recombinant Dog Cholinesterase protein (1-141AA).

Storage:

Preservative: 0.03% Proclin 300. Constituents: 50% Glycerol, 0.01M PBS, PH 7.4

Product Images



Immunohistochemistry of paraffin-embedded human testis tissue using PACO25224 at dilution of 1:100.