

PACO25220

---

## Product Information

**Size:**

50ug

**Reactivity:**

Human, Mouse

**Source:**

Rabbit

**Isotype:**

IgG

**Applications:**

ELISA, WB, IHC

**Recommended dilutions:**

ELISA:1:2000-1:10000, WB:1:1000-1:5000,  
IHC:1:20-1:200

**Protein Background:**

Catalyzes the first reaction in the catabolism of the essential branched chain amino acid, leucine, isoleucine, and valine. May also function as a transporter of branched chain alpha-keto acid, .

**Gene ID:**

BCAT2

**Uniprot**

O15382

**Synonyms:**

Branched-chain-amino-acid, aminotransferase, mitochondrial (BCAT(m)) (EC 2.6.1.42) (Placental protein 18) (PP18), BCAT2, BCATM BCT2 ECA40

**Immunogen:**

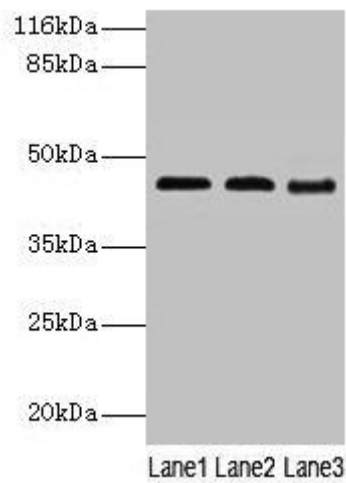
Recombinant Human Branched-chain-amino-acid, aminotransferase, mitochondrial protein (28-392AA).

**Storage:**

Preservative: 0.03% Proclin 300. Constituents: 50% Glycerol, 0.01M PBS, PH 7.4

## Product Images

---



### Western blot

All lanes: BCAT2 antibody at 2 $\mu$ g/ml

Lane 1: NIH/3T3 whole cell lysate

Lane 2: Mouse kidney tissue

Lane 3: Mouse spleen tissue

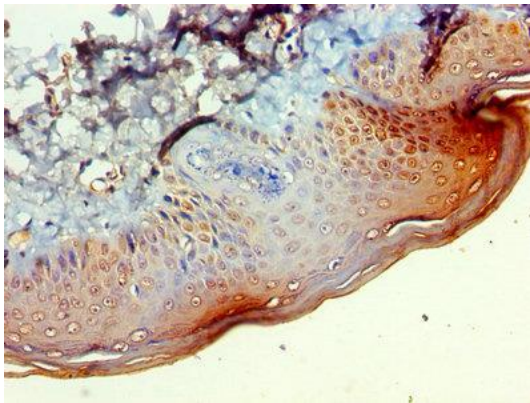
Secondary

Goat polyclonal to rabbit IgG at 1/10000 dilution

Predicted band size: 45, 34 kDa

Observed band size: 45 kDa

.



Immunohistochemistry of paraffin-embedded human skin tissue using PACO25220 at dilution of 1:100.