

PACO25014

Product Information

Size:

50ug

Reactivity:

Human

Source:

Rabbit

Isotype:

IgG

Applications:

ELISA, IHC, IF

Recommended dilutions:

ELISA:1:2000-1:10000, IHC:1:20-1:200,
IF:1:50-1:200

Protein Background:

Component of the MICOS complex, a large protein complex of the mitochondrial inner membrane that plays crucial roles in the maintenance of crista junctions, inner membrane architecture, and formation of contact sites to the outer membrane. Specifically binds to cardiolipin (in vitro) but not to the precursor lipid phosphatidylglycerol. Plays a crucial role in crista junction formation and mitochondrial function , .

Gene ID:

APOOL

Uniprot

Q6UXV4

Synonyms:

MICOS complex subunit MIC27 (Apolipoprotein O-like) (Protein FAM121A), APOOL, CXorf33 FAM121A MIC27

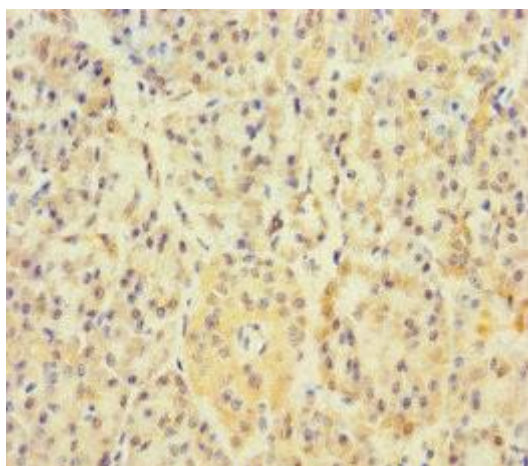
Immunogen:

Recombinant Human MICOS complex subunit MIC27 protein (163-268AA).

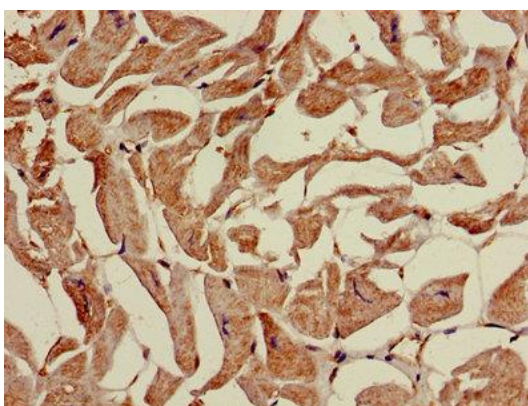
Storage:

Preservative: 0.03% Proclin 300. Constituents: 50% Glycerol, 0.01M PBS, PH 7.4

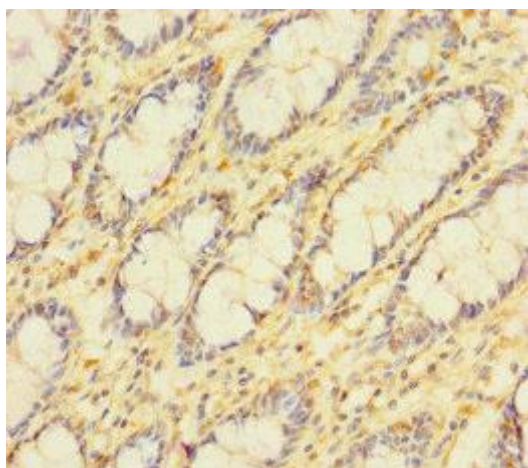
Product Images



Immunohistochemistry of paraffin-embedded human pancreatic tissue using PACO25014 at dilution of 1:100.



Immunohistochemistry of paraffin-embedded human heart tissue using PACO25014 at dilution of 1:100.



Immunohistochemistry of paraffin-embedded human colon tissue using PACO25014 at dilution of 1:100.