

PACO25010

Product Information

Size:

50ug

Reactivity:

Mouse

Source:

Rabbit

Isotype:

IgG

Applications:

ELISA, WB

Recommended dilutions:

ELISA:1:2000-1:10000, WB:1:1000-1:5000

Protein Background:

Mediates the binding, internalization, and catabolism of lipoprotein particles. It can serve as a ligand for the LDL (apo B/E) receptor and for the specific apo-E receptor (chylomicron remnant) of hepatic tissues.

Gene ID:

ApoE

Uniprot

P08226

Synonyms:

Apolipoprotein E (Apo-E), ApoE

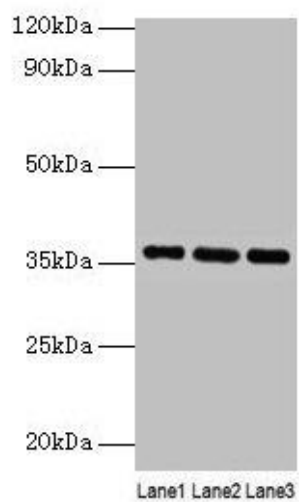
Immunogen:

Recombinant Mouse Apolipoprotein E protein (19-311AA).

Storage:

Preservative: 0.1mol/L NaCl, 15mmol/L NaN₃, PH7.2

Product Images



Western blot

All lanes: Apoe antibody at 2 μ g/ml

Lane 1: Mouse liver tissue

Lane 2: Mouse brain tissue

Lane 3: Mouse lung tissue

Secondary

Goat polyclonal to rabbit IgG at 1/10000 dilution

Predicted band size: 36 kDa

Observed band size: 36 kDa