

PACO24977

---

## Product Information

**Size:**

50ug

**Reactivity:**

Human

**Source:**

Rabbit

**Isotype:**

IgG

**Applications:**

ELISA, IHC

**Recommended dilutions:**

ELISA:1:2000-1:10000, IHC:1:20-1:200

**Protein Background:**

Endogenous ligand for APJ, an alternative coreceptor with CD4 for HIV-1 infection. Inhibits HIV-1 entry in cells coexpressing CD4 and APJ. Apelin-36 has a greater inhibitory activity on HIV infection than other synthetic apelin derivatives. The oral intake in the colostrum and the milk could have a role in the modulation of the immune responses in neonates. May also have a role in the central control of body fluid homeostasis by influencing AVP release and drinking behavior.

**Gene ID:**

APLN

**Uniprot**

Q9ULZ1

**Synonyms:**

Apelin (APJ endogenous ligand) [Cleaved into: Apelin-36; Apelin-31; Apelin-28; Apelin-13], APLN, APEL

**Immunogen:**

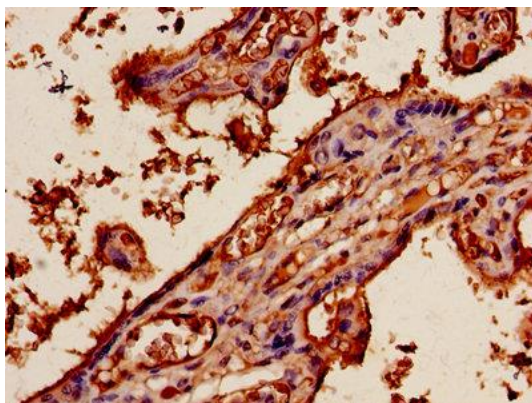
Peptide sequence from Human Apelin protein.

**Storage:**

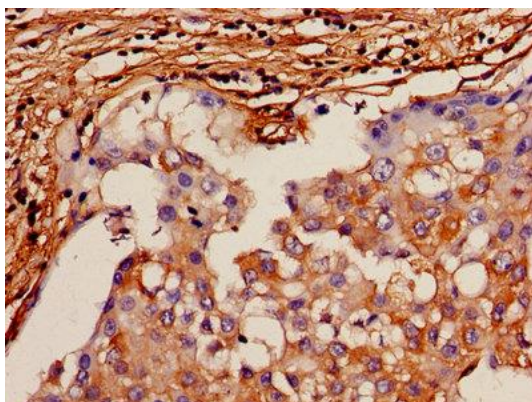
Preservative: 0.03% Proclin 300. Constituents: 50% Glycerol, 0.01M PBS, PH 7.4

## Product Images

---



Immunohistochemistry of paraffin-embedded human placenta tissue using PACO24977 at dilution of 1:100.



Immunohistochemistry of paraffin-embedded human breast cancer using PACO24977 at dilution of 1:100.