

PACO24952

Product Information

Size:

50ug

Reactivity:

Human

Source:

Rabbit

Isotype:

IgG

Applications:

ELISA, WB

Recommended dilutions:

ELISA:1:2000-1:10000, WB:1:1000-1:5000

Protein Background:

Subunit of clathrin-associated adaptor protein complex 1 that plays a role in protein sorting in the late-Golgi/trans-Golgi network (TGN) and/or endosomes. The AP complexes mediate both the recruitment of clathrin to membranes and the recognition of sorting signals within the cytosolic tails of transmembrane cargo molecules.

Gene ID:

AP1S3

Uniprot

Q96PC3

Synonyms:

AP-1 complex subunit sigma-3 (Adaptor protein complex AP-1 subunit sigma-1C) (Adaptor-related protein complex 1 subunit sigma-1C) (Clathrin assembly protein complex 1 sigma-1C small chain) (Golgi adaptor HA1/AP1 adaptin sigma-1C subunit) (Sigma 1C subunit of AP-1 clathrin) (Sigma-adaptin 1C) (Sigma1C-adaptin), AP1S3

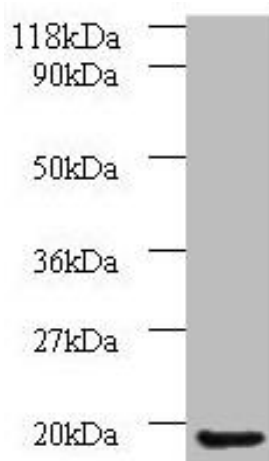
Immunogen:

Recombinant Human AP-1 complex subunit sigma-3 protein (1-104AA).

Storage:

Preservative: 0.03% Proclin 300. Constituents: 50% Glycerol, 0.01M PBS, PH 7.4

Product Images



Western blot

All lanes: AP1S3 antibody at 2 μ g/ml + A549 whole cell lysate

Secondary

Goat polyclonal to rabbit IgG at 1/10000 dilution

Predicted band size: 19, 20, 13 kDa

Observed band size: 19 kDa