

Anxa1 Antibody, HRP conjugated



PACO24921

Product Information

Size:

50ug

Reactivity:

Human, Mouse

Source:

Rabbit

Isotype:

IgG

Applications:

ELISA, WB

Recommended dilutions:

ELISA:1:2000-1:10000, WB:1:500-1:5000

Protein Background:

Calcium/phospholipid-binding protein which promotes membrane fusion and is involved in exocytosis. This protein regulates phospholipase A2 activity. It seems to bind from two to four calcium ions with high affinity.

Gene ID:

Anxa1

Uniprot

P10107

Synonyms:

Annexin A1 (Annexin I) (Annexin-1) (Calpactin II) (Calpactin-2) (Chromobindin-9) (Lipocortin I) (Phospholipase A2 inhibitory protein) (p35), Anxa1, Anx1 Lpc-1 Lpc1

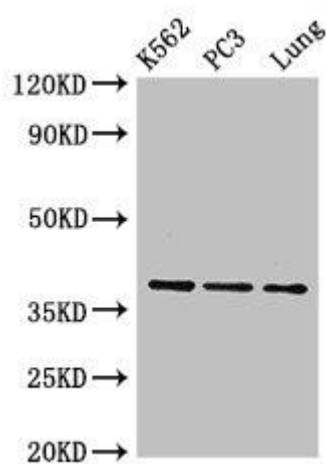
Immunogen:

Recombinant Mouse Annexin A1 protein (2-346AA).

Storage:

Preservative: 0.03% Proclin 300. Constituents: 50% Glycerol, 0.01M PBS, PH 7.4

Product Images



Western Blot

Positive WB detected in: K562 whole cell lysate, PC-3 whole cell lysate, Mouse lung tissue

All lanes: Anxa1 antibody; HRP conjugated at 0.42 μ g/ml

Predicted band size: 39 kDa

Observed band size: 39 kDa