

RuBisCO activase Antibody



PACO24900

Product Information

Size:

50ug

Reactivity:

Spinach

Source:

Rabbit

Isotype:

IgG

Applications:

ELISA, WB

Recommended dilutions:

ELISA:1:2000-1:10000, WB:1:1000-1:5000

Protein Background:

Gene ID:

Uniprot

P10871

Synonyms:

Ribulose biphosphate carboxylase/oxygenase activase, chloroplastic (RA) (RuBisCO activase)

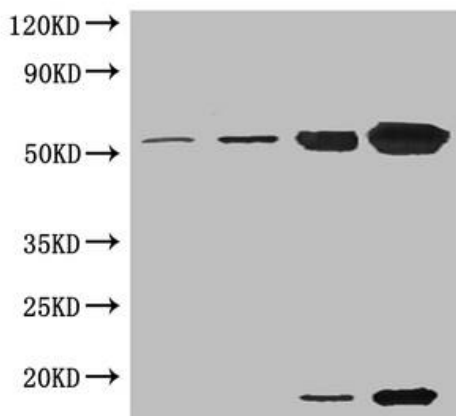
Immunogen:

Ribulose-1,5-bisphosphate carboxylase oxygenase (Native Protein).

Storage:

Preservative: 0.03% Proclin 300. Constituents: 50% Glycerol, 0.01M PBS, PH 7.4

Product Images



Western blot

All lanes: Ribulose-1,5-bisphosphate carboxylase oxygenase antibody at 5 μ g/ml

Lane 1: Ribulose-1,5-bisphosphate carboxylase oxygenase at 0.01 μ g/ml

Lane 2: Ribulose-1,5-bisphosphate carboxylase oxygenase at 0.1 μ g/ml

Lane 3: Ribulose-1,5-bisphosphate carboxylase oxygenase at 1 μ g/ml

Lane 4: Ribulose-1,5-bisphosphate carboxylase oxygenase at 10 μ g/ml

Secondary

Goat polyclonal to rabbit IgG at 1/15000 dilution

Predicted band size: 55, 14 kDa

Observed band size: 55, 14 kDa