

Aldh1a1 Antibody



PACO24864

Product Information

Size:

50ug

Reactivity:

Mouse

Source:

Rabbit

Isotype:

IgG

Applications:

ELISA, WB

Recommended dilutions:

ELISA:1:2000-1:10000, WB:1:500-1:2000

Protein Background:

In addition to the activity on acetaldehyde and related substrates, is also involved in the oxidation of aldehydes derived from biogenic amines such as epinephrine and norepinephrine, as well as the aldehydes generated via lipid peroxidation. Binds free retinal and cellular retinol-binding protein-bound retinal. Can convert/oxidize retinaldehyde to retinoic acid, .

Gene ID:

Aldh1a1

Uniprot

P24549

Synonyms:

Retinal dehydrogenase 1 (RALDH 1) (RalDH1) (EC 1.2.1. -) (EC 1.2.1.36) (ALDH-E1) (ALHDII) (Aldehyde dehydrogenase family 1 member A1) (Aldehyde dehydrogenase, cytosolic), Aldh1a1, Ahd-2 Ahd2 Aldh1

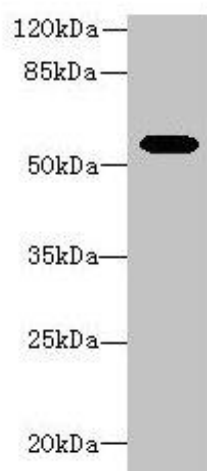
Immunogen:

Recombinant Mouse Retinal dehydrogenase 1 protein (2-501AA).

Storage:

Preservative: 0.03% Proclin 300. Constituents: 50% Glycerol, 0.01M PBS, PH 7.4

Product Images



Western blot

All lanes: Aldh1a1 antibody at 8 μ g/ml + Mouse eye tissue

Secondary

Goat polyclonal to rabbit IgG at 1/10000 dilution

Predicted band size: 55 kDa

Observed band size: 55 kDa

.