

PACO24839

Product Information

Size:

50ug

Reactivity:

Human

Source:

Rabbit

Isotype:

IgG

Applications:

ELISA, IHC, IF

Recommended dilutions:

ELISA:1:2000-1:10000, IHC:1:20-1:200,
IF:1:50-1:200

Protein Background:

Targets the cAMP-dependent protein kinase (PKA) to the plasma membrane, and permits functional coupling to the L-type calcium channel. The membrane-associated form reduces epithelial sodium channel (ENaC) activity, whereas the free cytoplasmic form may negatively regulate ENaC channel feedback inhibition by intracellular sodium.

Gene ID:

AKAP7

Uniprot

O43687

Synonyms:

A-kinase anchor protein 7 isoforms alpha and beta (AKAP-7 isoforms alpha and beta) (A-kinase anchor protein 18 kDa) (AKAP 18) (Protein kinase A-anchoring protein 7 isoforms alpha/beta) (PRKA7 isoforms alpha/beta), AKAP7, AKAP15 AKAP18

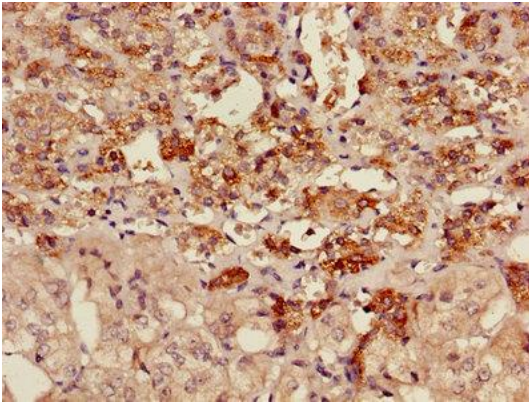
Immunogen:

Recombinant Human A-kinase anchor protein 7 isoforms α and β; protein (1-81AA).

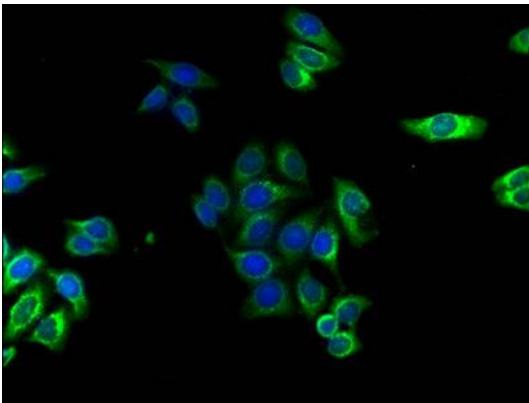
Storage:

Preservative: 0.03% Proclin 300. Constituents: 50% Glycerol, 0.01M PBS, PH 7.4

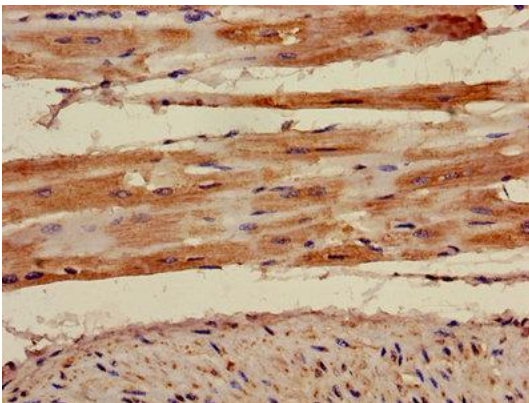
Product Images



Immunohistochemistry of paraffin-embedded human adrenal gland tissue using PACO24839 at dilution of 1:100.



Immunofluorescence staining of HepG2 cells with PACO24839 at 1:120, counter-stained with DAPI. The cells were fixed in 4% formaldehyde, permeabilized using 0.2% Triton X-100 and blocked in 10% normal Goat Serum. The cells were then incubated with the antibody overnight at 4°C. The secondary antibody was Alexa Fluor 488-conjugated AffiniPure Goat Anti-Rabbit IgG (H+L).



Immunohistochemistry of paraffin-embedded human heart tissue using PACO24839 at dilution of 1:100.