

PACO24823

---

## Product Information

**Size:**

50ug

**Reactivity:**

Mouse, Human

**Source:**

Rabbit

**Isotype:**

IgG

**Applications:**

ELISA, WB

**Recommended dilutions:**

ELISA:1:2000-1:10000, WB:1:1000-1:5000

**Protein Background:**

Actin-binding protein that enhances membrane ruffling and RAC activation. Enhances the actin-bundling activity of LCP1. Binds calcium. Plays a role in RAC signaling and in phagocytosis. May play a role in macrophage activation and function. Promotes the proliferation of vascular smooth muscle cells and of T-lymphocytes. Enhances lymphocyte migration. Plays a role in vascular inflammation.

**Gene ID:**

Aif1

**Uniprot**

O70200

**Synonyms:**

Allograft inflammatory factor 1 (AIF-1) (Ionized calcium-binding adapter molecule 1), Aif1, Iba1

**Immunogen:**

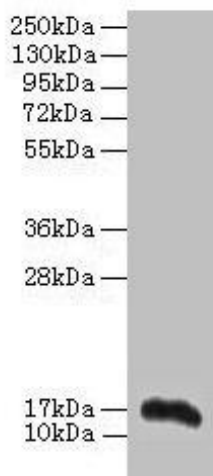
Recombinant Mouse Allograft inflammatory factor 1 protein (2-147AA).

**Storage:**

Preservative: 0.03% Proclin 300. Constituents: 50% Glycerol, 0.01M PBS, PH 7.4

## Product Images

---



### Western blot

All lanes: Aif1 antibody at 2 $\mu$ g/ml + THP-1 whole cell lysate

Secondary

Goat polyclonal to rabbit IgG at 1/10000 dilution

Predicted band size: 17 kDa

Observed band size: 17 kDa