

PACO24807

---

## Product Information

**Size:**

50ug

**Reactivity:**

Human, Mouse

**Source:**

Rabbit

**Isotype:**

IgG

**Applications:**

ELISA, WB

**Recommended dilutions:**

ELISA:1:2000-1:10000, WB:1:1000-1:5000

**Protein Background:**

Cleaves the GlcNAc-Asn bond which joins oligosaccharides to the peptide of asparagine-linked glycoproteins.

**Gene ID:**

AGA

**Uniprot**

P20933

**Synonyms:**

N(4)-(beta-N-acetylglucosaminy)-L-asparaginase (EC 3.5.1.26) (Aspartylglucosaminidase) (Glycosylasparaginase) (N4-(N-acetyl-beta-glucosaminy)-L-asparagine amidase) [Cleaved into: Glycosylasparaginase alpha chain; Glycosylasparaginase beta chain], AGA

**Immunogen:**

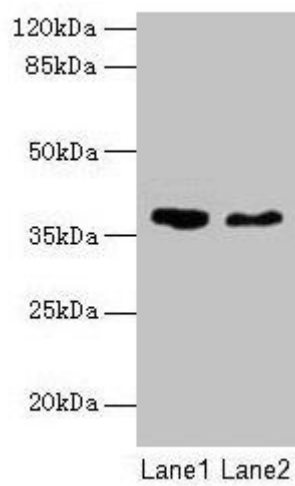
Recombinant Human N(4)-(beta-N-acetylglucosaminy)-L-asparaginase protein (206-346AA).

**Storage:**

Preservative: 0.03% Proclin 300. Constituents: 50% Glycerol, 0.01M PBS, PH 7.4

## Product Images

---



### Western blot

All lanes: AGA antibody at 10 $\mu$ g/ml

Lane 1: 293T whole cell lysate

Lane 2: Mouse muscle tissue

Secondary

Goat polyclonal to rabbit IgG at 1/10000 dilution

Predicted band size: 38 kDa

Observed band size: 38 kDa

.