

PACO24771

---

## Product Information

**Size:**

50ug

**Reactivity:**

Human

**Source:**

Rabbit

**Isotype:**

IgG

**Applications:**

ELISA, WB, IHC, IF

**Recommended dilutions:**

ELISA:1:2000-1:10000, WB:1:1000-1:5000,  
IHC:1:20-1:200, IF:1:50-1:200

**Protein Background:**

The protein encoded by this gene is a member of the alcohol dehydrogenase family. Members of this enzyme family metabolize a wide variety of substrates, including ethanol, retinol, other aliphatic alcohols, hydroxysteroids, and lipid peroxidation products. This encoded protein, consisting of several homo- and heterodimers of alpha, beta, and gamma subunits, exhibits high activity for ethanol oxidation and plays a major role in ethanol catabolism. Three genes encoding alpha, beta and gamma subunits are tandemly organized in a genomic segment as a gene cluster. Two transcript variants encoding different isoforms have been found for this gene.

**Gene ID:**

ADH1B

**Uniprot**

P00325

**Synonyms:**

Alcohol dehydrogenase 1B (EC 1.1.1.1) (Alcohol dehydrogenase subunit beta), ADH1B, ADH2

**Immunogen:**

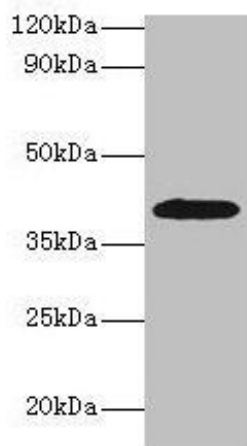
Recombinant Human Alcohol dehydrogenase 1B protein (2-375AA).

**Storage:**

Preservative: 0.03% Proclin 300. Constituents: 50% Glycerol, 0.01M PBS, PH 7.4

## Product Images

---



### Western blot

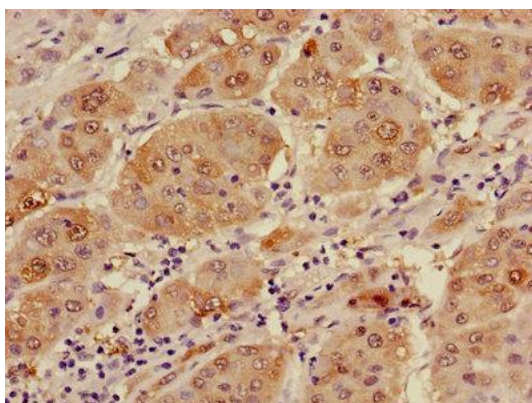
All lanes: ADH1B antibody at 2 $\mu$ g/ml + HepG2 whole cell lysate

Secondary

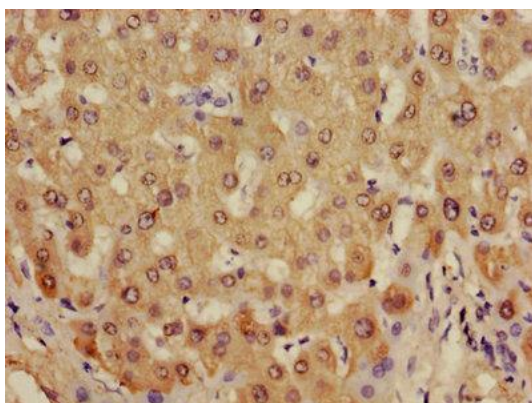
Goat polyclonal to rabbit IgG at 1/15000 dilution

Predicted band size: 40, 36 kDa

Observed band size: 40 kDa



Immunohistochemistry of paraffin-embedded human liver cancer using PACO24771 at dilution of 1:100.



Immunohistochemistry of paraffin-embedded human liver tissue using PACO24771 at dilution of 1:100.