

ADAM10 Antibody



PACO24755

Product Information

Size:

50ug

Reactivity:

Human

Source:

Rabbit

Isotype:

IgG

Applications:

ELISA, IHC, IF

Recommended dilutions:

ELISA:1:2000-1:10000, IHC:1:20-1:200,
IF:1:50-1:200

Protein Background:

Gene ID:

ADAM10

Uniprot

O14672

Synonyms:

Disintegrin and metalloproteinase domain-containing protein 10 (ADAM 10) (EC 3.4.24.81) (CDw156) (Kuzbanian protein homolog) (Mammalian disintegrin-metalloprotease) (CD antigen CD156c), ADAM10, KUZ MADM

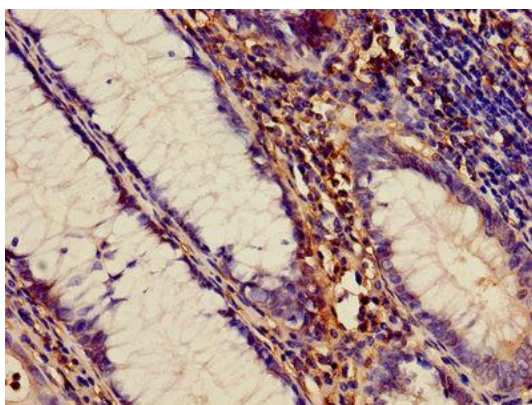
Immunogen:

Recombinant Human Disintegrin and metalloproteinase domain-containing protein 10 protein (214-504AA).

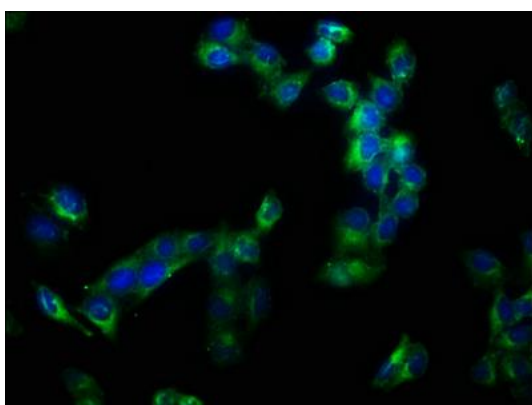
Storage:

Preservative: 0.03% Proclin 300. Constituents: 50% Glycerol, 0.01M PBS, PH 7.4

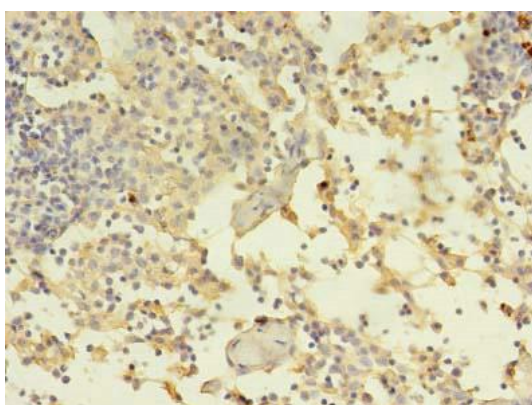
Product Images



Immunohistochemistry of paraffin-embedded human colon cancer using PACO24755 at dilution of 1:100.



Immunofluorescence staining of HeLa cells with PACO24755 at 1:133, counter-stained with DAPI. The cells were fixed in 4% formaldehyde, permeabilized using 0.2% Triton X-100 and blocked in 10% normal Goat Serum. The cells were then incubated with the antibody overnight at 4°C. The secondary antibody was Alexa Fluor 488-conjugated AffiniPure Goat Anti-Rabbit IgG(H+L).



Immunohistochemistry of paraffin-embedded human thymus tissue using PACO24755 at dilution of 1:100.