

PACO24738

---

## Product Information

**Size:**

50ug

**Reactivity:**

Human

**Source:**

Rabbit

**Isotype:**

IgG

**Applications:**

ELISA, IHC, IF

**Recommended dilutions:**

ELISA:1:2000-1:10000, IHC:1:20-1:200,  
IF:1:50-1:200

**Protein Background:**

Actins are highly conserved proteins that are involved in various types of cell motility and are ubiquitously expressed in all eukaryotic cells.

**Gene ID:**

ACTB

**Uniprot**

P60709

**Synonyms:**

Actin, cytoplasmic 1 (Beta-actin) [Cleaved into: Actin, cytoplasmic 1, N-terminally processed], ACTB

**Immunogen:**

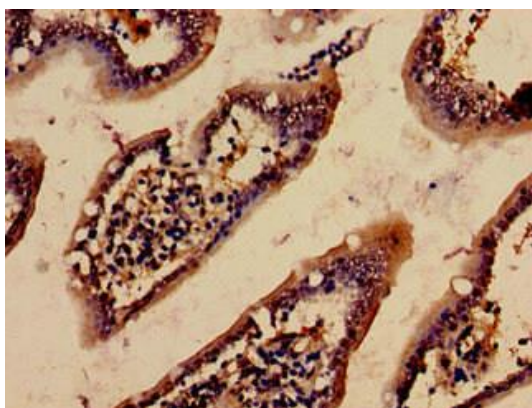
Peptide sequence from Human Actin, cytoplasmic 1 protein (102-375AA).

**Storage:**

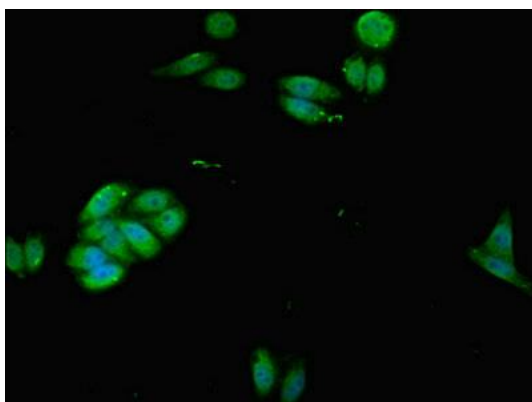
Preservative: 0.03% Proclin 300. Constituents: 50% Glycerol, 0.01M PBS, PH 7.4

## Product Images

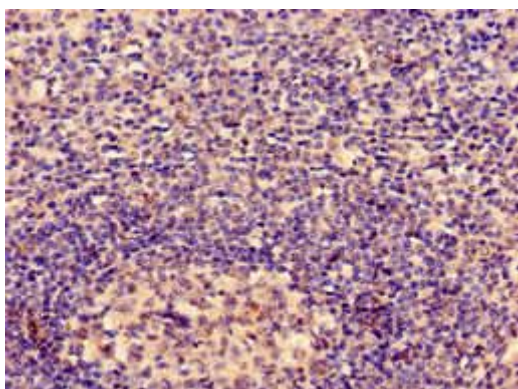
---



Immunohistochemistry analysis of human small intestine tissue using PACO24738 at dilution of 1:100.



Immunofluorescent analysis of HepG2 cells using PACO24738 at dilution of 1:100 and Alexa Fluor 488-conjugated AffiniPure Goat Anti-Rabbit IgG(H+L).



Immunohistochemistry analysis of human tonsil tissue using PACO24738 at dilution of 1:100.