

Product Information

Size:

50ug

Reactivity:

Human

Source:

Rabbit

Isotype:

IgG

Applications:

ELISA, WB, IHC

Recommended dilutions:

ELISA:1:2000-1:10000, WB:1:1000-1:5000,
IHC:1:20-1:200

Protein Background:

EIF3S2 is the largest of the EIFs. It consists of at least 10 nonidentical subunits in mammals. In *S. cerevisiae* the p39 subunit contains WD repeats; these are thought to mediate protein-protein interactions. The p39 protein appears to be essential for maintaining the integrity of the yeast EIF3 complex. The mammalian EIF3-p36 subunit is homologous to yeast p39.

Gene ID:

ILF2

Uniprot

Q12905

Synonyms:

Interleukin enhancer-binding factor 2 (Nuclear factor of activated T-cells 45 kDa), ILF2, NF45

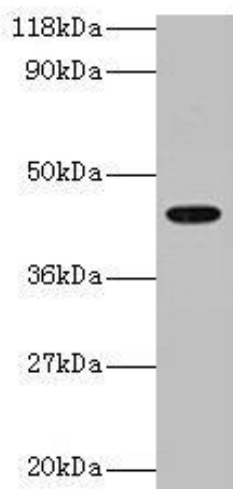
Immunogen:

Recombinant Human Interleukin enhancer-binding factor 2 protein (1-390AA).

Storage:

Preservative: 0.03% Proclin 300. Constituents: 50% Glycerol, 0.01M PBS, PH 7.4

Product Images



Western blot

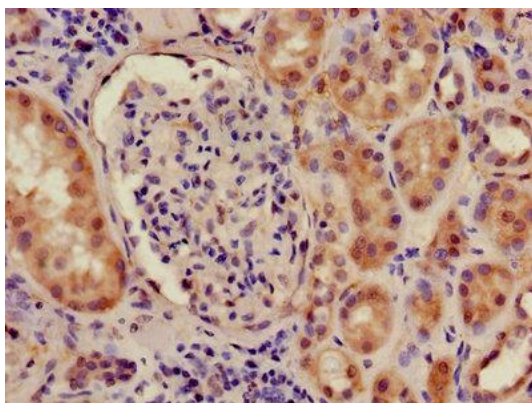
All lanes: ILF2 antibody at 2 μ g/ml + 293T whole cell lysate

Secondary

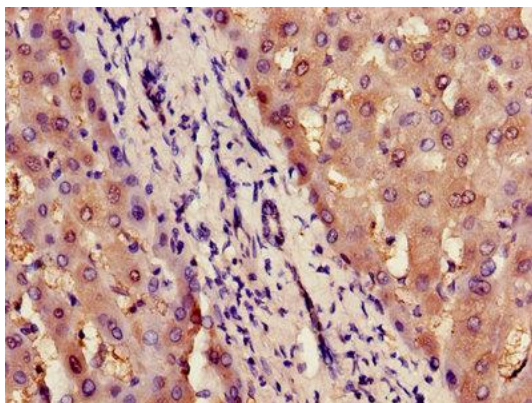
Goat polyclonal to rabbit IgG at 1/15000 dilution

Predicted band size: 44 kDa

Observed band size: 44 kDa



Immunohistochemistry of paraffin-embedded human kidney tissue using PACO24712 at dilution of 1:100.



Immunohistochemistry of paraffin-embedded human liver tissue using PACO24712 at dilution of 1:100.