

PACO24704

Product Information

Size:

50ug

Reactivity:

Human, Mouse

Source:

Rabbit

Isotype:

IgG

Applications:

ELISA, WB, IHC

Recommended dilutions:

ELISA:1:2000-1:10000, WB:1:500-1:2000,
IHC:1:20-1:1:200

Protein Background:

mitochondrial matrix, acyl-CoA dehydrogenase activity, electron carrier activity, fatty-acyl-CoA binding, flavin adenine dinucleotide binding, long-chain-acyl-CoA dehydrogenase activity, oxidoreductase activity, acting on the CH-CH group of donors, with a flavin as acceptor, palmitoyl-CoA oxidase activity, carnitine catabolic process, carnitine metabolic process, CoA-linked.

Gene ID:

ACADL

Uniprot

P28330

Synonyms:

Long-chain specific acyl-CoA dehydrogenase, mitochondrial (LCAD) (EC 1.3.8.8), ACADL

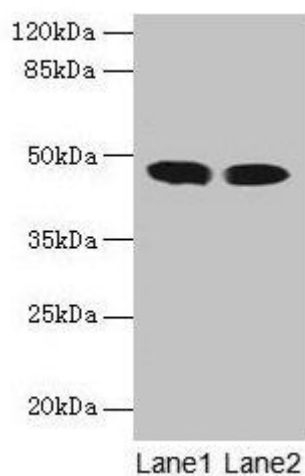
Immunogen:

Recombinant Human Long-chain specific acyl-CoA dehydrogenase, mitochondrial protein (30-260AA).

Storage:

Preservative: 0.03% Proclin 300. Constituents: 50% Glycerol, 0.01M PBS, PH 7.4

Product Images



Western blot

All lanes: ACADL antibody at 8 μ g/ml

Lane 1: Mouse kidney tissue

Lane 2: Mouse heart tissue

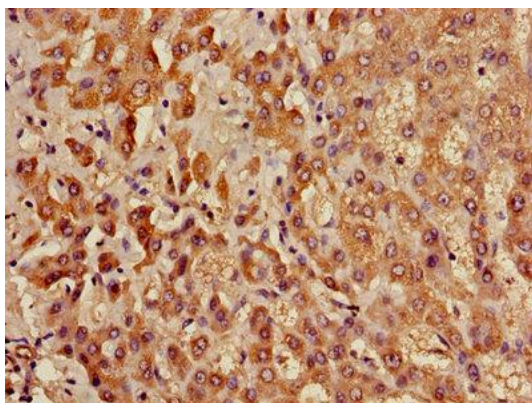
Secondary

Goat polyclonal to rabbit IgG at 1/10000 dilution

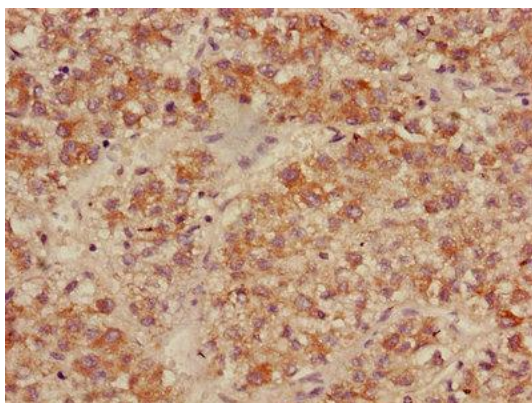
Predicted band size: 48 kDa

Observed band size: 48 kDa

.



Immunohistochemistry of paraffin-embedded human liver tissue using PACO24704 at dilution of 1:100.



Immunohistochemistry of paraffin-embedded human liver cancer using PACO24704 at dilution of 1:100.