

# ABLIM3 Antibody



PACO24696

---

## Product Information

**Size:**

50ug

**Reactivity:**

Human

**Source:**

Rabbit

**Isotype:**

IgG

**Applications:**

ELISA, IHC, IF

**Recommended dilutions:**

ELISA:1:2000-1:10000, IHC:1:20-1:200,  
IF:1:50-1:200

**Protein Background:**

May act as scaffold protein. May stimulate ABRA activity and ABRA-dependent SRF transcriptional activity.

**Gene ID:**

ABLIM3

**Uniprot**

O94929

**Synonyms:**

Actin-binding LIM protein 3 (abLIM-3) (Actin-binding LIM protein family member 3), ABLIM3, KIAA0843

**Immunogen:**

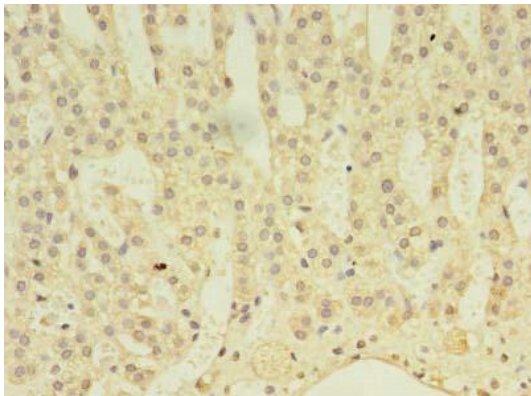
Recombinant Human Actin-binding LIM protein 3 protein (266-544AA).

**Storage:**

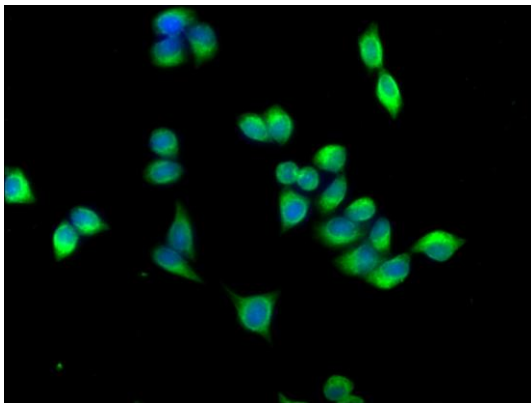
Preservative: 0.03% Proclin 300. Constituents: 50% Glycerol, 0.01M PBS, PH 7.4

## Product Images

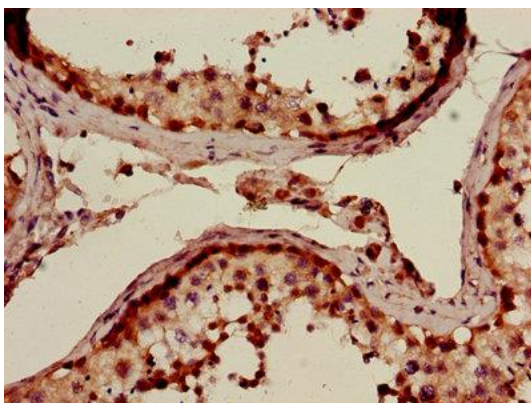
---



Immunohistochemistry of paraffin-embedded human adrenal gland tissue using PACO24696 at dilution of 1:100.



Immunofluorescence staining of PC-3 cells with PACO24696 at 1:166, counter-stained with DAPI. The cells were fixed in 4% formaldehyde, permeabilized using 0.2% Triton X-100 and blocked in 10% normal Goat Serum. The cells were then incubated with the antibody overnight at 4°C. The secondary antibody was Alexa Fluor 488-conjugated AffiniPure Goat Anti-Rabbit IgG (H+L).



Immunohistochemistry of paraffin-embedded human testis tissue using PACO24696 at dilution of 1:100.