

ABHD2 Antibody



PACO24688

Product Information

Size:

50ug

Reactivity:

Human, Mouse, Rat

Source:

Rabbit

Isotype:

IgG

Applications:

ELISA, WB, IHC, IF

Recommended dilutions:

ELISA:1:2000-1:10000, WB:1:500-1:5000,
IHC:1:20-1:200, IF:1:50-1:200

Protein Background:

May play a role in smooth muscle cells migration.

Gene ID:

ABHD2

Uniprot

P08910

Synonyms:

Monoacylglycerol lipase ABHD2 (EC 3.1.1.23) (2-arachidonoylglycerol hydrolase) (Abhydrolase domain-containing protein 2) (Lung alpha/beta hydrolase 2) (Protein PPHS1-2), ABHD2, LABH2

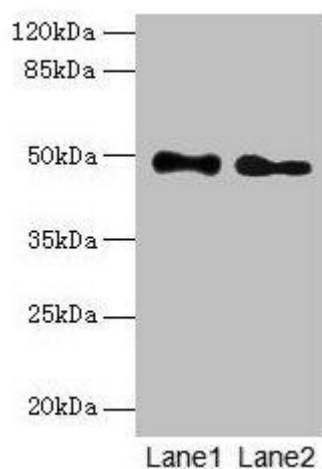
Immunogen:

Recombinant Human Monoacylglycerol lipase ABHD2 protein (31-320AA).

Storage:

Preservative: 0.03% Proclin 300. Constituents: 50% Glycerol, 0.01M PBS, PH 7.4

Product Images



Western blot

All lanes: ABHD2 antibody at 10 μ g/ml

Lane 1: Mouse heart tissue

Lane 2: Rat gonadal tissue

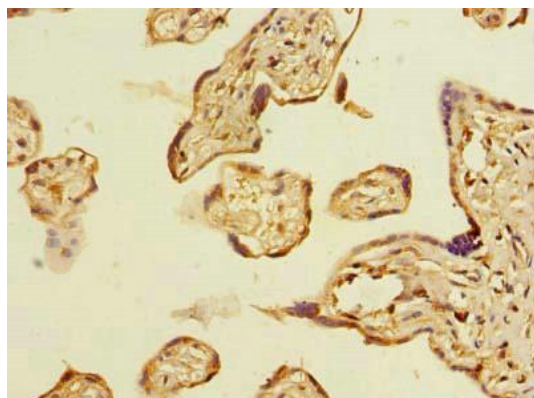
Secondary

Goat polyclonal to rabbit IgG at 1/10000 dilution

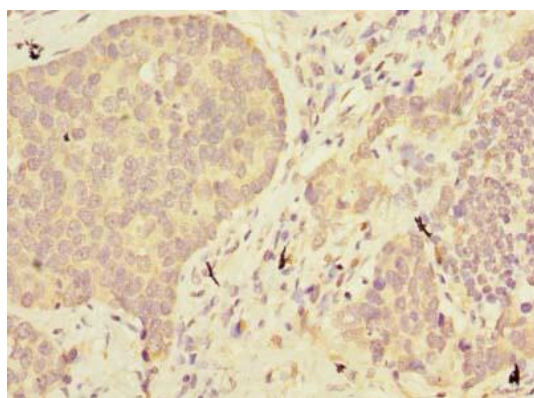
Predicted band size: 49 kDa

Observed band size: 49 kDa

.



Immunohistochemistry of paraffin-embedded human placenta tissue using PACO24688 at dilution of 1:100.



Immunohistochemistry of paraffin-embedded human gastric cancer using PACO24688 at dilution of 1:100.