

# Phospho-RELA (Ser276) Antibody



PACO24567

---

## Product Information

**Size:**

100ul

**Reactivity:**

Human, Mouse, Rat

**Source:**

Rabbit

**Isotype:**

IgG

**Applications:**

ELISA, WB, IHC, IF

**Recommended dilutions:**

ELISA:1:2000-1:10000, WB:1:500-1:1000,  
IHC:1:50-1:100, IF:1:100-1:200

**Protein Background:****Gene ID:**

RELA

**Uniprot**

Q04206

**Synonyms:**

p65, NFKB3

**Immunogen:**

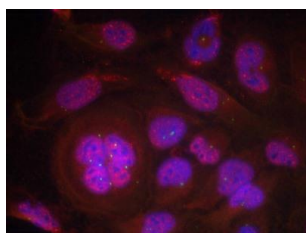
Peptide sequence around phosphorylation site of serine 276(R-P-S(p)-D-R) derived from Human NF  $\kappa$ B-p65.

**Storage:**

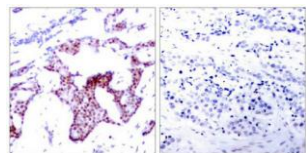
Supplied at 1.0mg/mL in phosphate buffered saline (without Mg<sup>2+</sup> and Ca<sup>2+</sup>), pH 7.4, 150mM NaCl, 0.02% sodium azide and 50% glycerol.

## Product Images

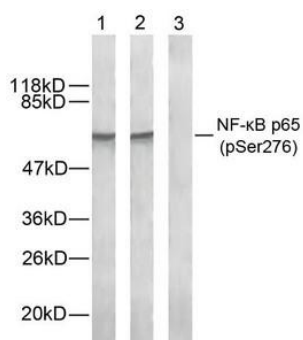
---



Immunofluorescence staining of methanol-fixed HeLa cells using NF-κB p65 (Phospho-Ser276) Antibody.



Immunohistochemical analysis of paraffin-embedded human breast carcinoma tissue using NF-κB p65 (Phospho-Ser276) Antibody (left) or the same antibody preincubated with blocking peptide (right).



Western blot analysis of extract from HeLa cells using NF-κB p65 (phospho-Ser276) antibody. Lane 1: The antibody is not preincubated with blocking peptides. Lane 2: The antibody is preincubated with non-phospho peptide blocking peptides. Lane 3: The antibody is preincubated with phospho peptide blocking peptides.