

Phospho-NUDC (Ser326) Antibody



PACO24533

Product Information

Size:

100ul

Reactivity:

Human, Mouse, Rat

Source:

Rabbit

Isotype:

IgG

Applications:

ELISA, WB, IHC

Recommended dilutions:

ELISA:1:2000-1:10000, WB:1:500-1:1000,
IHC:1:50-1:100

Protein Background:

Plays a role in neurogenesis and neuronal migration By similarity. Necessary for correct formation of mitotic spindles and chromosome separation during mitosis. Necessary for cytokinesis and cell proliferation.

Gene ID:

NUDC

Uniprot

Q9Y266

Synonyms:

MNUDC protein; Nuclear distribution gene C (A. nidulans) homolog; SIG-92

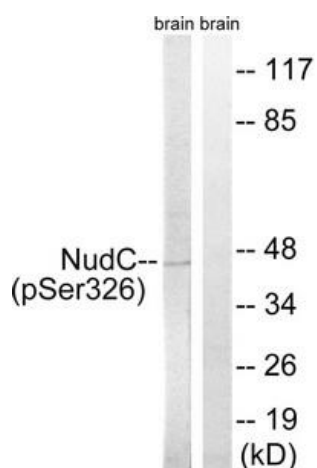
Immunogen:

Peptide sequence around phosphorylation site of serine 326 (D-F-S(p)-K-A) derived from Human NudC.

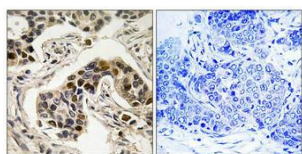
Storage:

Rabbit IgG in phosphate buffered saline (without Mg²⁺ and Ca²⁺), pH 7.4, 150mM NaCl, 0.02% sodium azide and 50% glycerol.

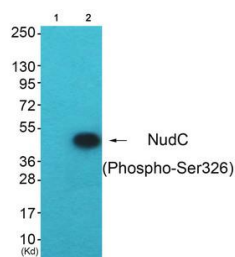
Product Images



Western blot analysis of extracts from rat brain cells, using NudC (Phospho-Ser326) antibody. The lane on the right is treated with the synthesized peptide.



Immunohistochemistry analysis of paraffin-embedded human breast carcinoma tissue using NudC (Phospho-Ser326) antibody. The picture on the right is treated with the synthesized peptide.



Western blot analysis of extracts from HepG2 cells (Lane 2), using NudC (Phospho-Ser326) Antibody. The lane on the left is treated with synthesized peptide.