

# Phospho-RARA (Ser77) Antibody



PACO24531

---

## Product Information

**Size:**

100ul

**Reactivity:**

Human, Mouse, Rat

**Source:**

Rabbit

**Isotype:**

IgG

**Applications:**

ELISA, WB, IHC

**Recommended dilutions:**

ELISA:1:2000-1:10000, WB:1:500-1:1000,  
IHC:1:50-1:100

**Protein Background:****Gene ID:**

RARA

**Uniprot**

P10276

**Synonyms:**

NR1B1; RAR-alpha; Retinoic acid, receptor alpha; retinoic acid, receptor; alpha; RRA

**Immunogen:**

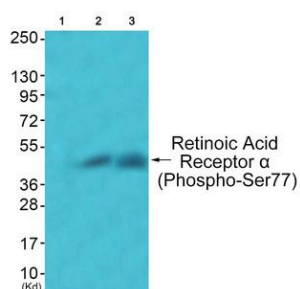
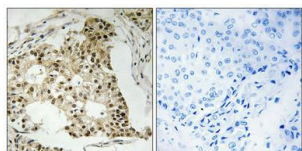
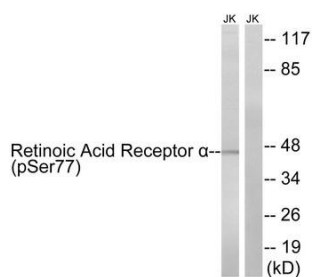
Peptide sequence around phosphorylation site of serine 77 (P-P-S(p)-P-P) derived from Human Retinoic acid, Receptor &alpha; .

**Storage:**

Rabbit IgG in phosphate buffered saline (without Mg<sup>2+</sup> and Ca<sup>2+</sup>), pH 7.4, 150mM NaCl, 0.02% sodium azide and 50% glycerol.

## Product Images

---



Western blot analysis of extracts from Jurkat cells treated with PMA (125ng/ml, 30mins), using Retinoic Acid Receptor alpha (Phospho-Ser77) antibody. The lane on the right is treated with the synthesized peptide.

Immunohistochemistry analysis of paraffin-embedded human breast carcinoma tissue using Retinoic Acid Receptor alpha (Phospho-Ser77) antibody. The picture on the right is treated with the synthesized peptide.

Western blot analysis of extracts from JK cells (Lane 2) and COS7 cells (Lane 3), using Retinoic Acid Receptor alpha (Phospho-Ser77) Antibody. The lane on the left is treated with synthesized peptide.