

Tri-Methyl-Histone H3 (Lys27) Antibody



PACO24517

Product Information

Size:

100ul

Reactivity:

Human, Mouse, Rat

Source:

Rabbit

Isotype:

IgG

Applications:

ELISA, WB, IHC, IF

Recommended dilutions:

ELISA:1:2000-1:10000, WB:1:500-1:1000,
IHC:1:50-1:100, IF:1:100-1:200

Protein Background:**Gene ID:**

HIST1H3A

Uniprot

P68431

Synonyms:

H3/a, H3/c, H3/d, H3/f, H3/h

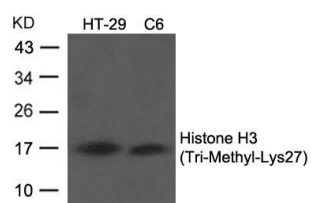
Immunogen:

Peptide sequence around Tri-Methylation site of lysine 27(A-R-K(tri-methyl)-S-A) derived from Human Histone H3.

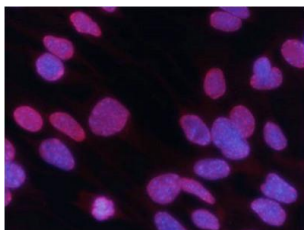
Storage:

Supplied at 1.0mg/mL in phosphate buffered saline (without Mg²⁺ and Ca²⁺), pH 7.4, 150mM NaCl, 0.02% sodium azide and 50% glycerol.

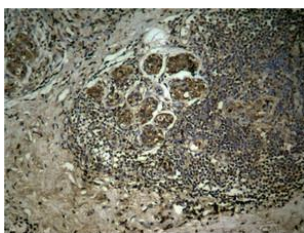
Product Images



Western blot analysis of extracts from HT29 and C6 cells using Histone H3 (Tri-Methyl-Lys27) Antibody.



Immunofluorescence staining of methanol-fixed MEF cells using Histone H3 (Tri-Methyl-Lys27) Antibody.



Immunohistochemical analysis of paraffin-embedded human breast carcinoma tissue using Histone H3 (Tri-Methyl-Lys27) Antibody.