

Phospho-HSF1 (Ser303) Antibody



PACO24493

Product Information

Size:

100ul

Reactivity:

Human

Source:

Rabbit

Isotype:

IgG

Applications:

ELISA, WB, IHC

Recommended dilutions:

ELISA:1:2000-1:10000, WB:1:500-1:1000,
IHC:1:50-1:100

Protein Background:**Gene ID:**

HSF1

Uniprot

Q00613

Synonyms:

HSTF 1

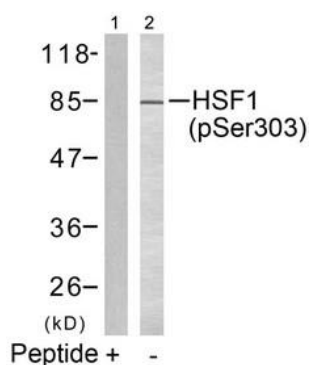
Immunogen:

Peptide sequence around phosphorylation site of serine 303 (P-P-S(p)-P-P) derived from Human HSF1.

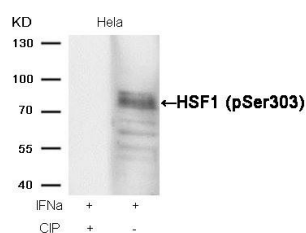
Storage:

Supplied at 1.0mg/mL in phosphate buffered saline (without Mg²⁺ and Ca²⁺), pH 7.4, 150mM NaCl, 0.02% sodium azide and 50% glycerol.

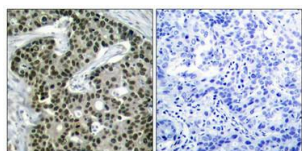
Product Images



Western blot analysis of extracts from MCF7 cells using HSF1(phospho-Ser303) Antibody(Lane 2) and the same antibody preincubated with blocking peptide(Lane1).



Western blot analysis of extracts from HeLa cells, treated with IFNa or calf intestinal phosphatase (CIP), using HSF1 (phospho-Ser303) Antibody.



Immunohistochemical analysis of paraffin-embedded human breast carcinoma tissue using HSF1(Phospho-Ser303) Antibody(left) or the same antibody preincubated with blocking peptide(right).