

# Phospho-HSF1 (Ser307) Antibody



PACO24480

---

## Product Information

**Size:**

100ul

**Reactivity:**

Human

**Source:**

Rabbit

**Isotype:**

IgG

**Applications:**

ELISA, WB, IF

**Recommended dilutions:**

ELISA:1:2000-1:10000, WB:1:500-1:1000,  
IF:1:100-1:200

**Protein Background:****Gene ID:**

HSF1

**Uniprot**

Q00613

**Synonyms:**

HSTF 1

**Immunogen:**

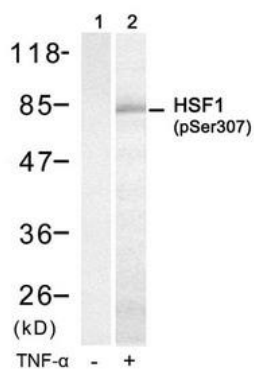
Peptide sequence around phosphorylation site of serine 307 (P-Q-S(p)-P-R) derived from Human HSF1.

**Storage:**

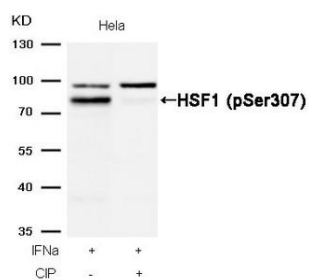
Supplied at 1.0mg/mL in phosphate buffered saline (without Mg<sup>2+</sup> and Ca<sup>2+</sup>), pH 7.4, 150mM NaCl, 0.02% sodium azide and 50% glycerol.

## Product Images

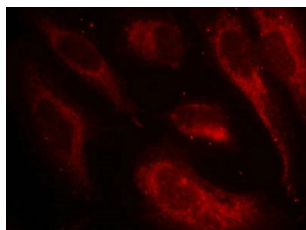
---



Western blot analysis of extracts from HUVEC cells untreated (lane 1) or treated with TNF- $\alpha$  (lane 2) using HSF1 (Phospho-Ser307) Antibody.



Western blot analysis of extracts from HeLa cells, treated with IFN $\alpha$  or calf intestinal phosphatase (CIP), using HSF1 (Phospho-Ser307) Antibody.



Immunofluorescence staining of methanol-fixed HeLa cells using HSF1 (Phospho-Ser307) Antibody.