

Phospho-ERBB2 (Tyr1221/Tyr1222) Antibody



PACO24452

Product Information

Size:

100ul

Reactivity:

Human

Source:

Rabbit

Isotype:

IgG

Applications:

ELISA, WB, IF

Recommended dilutions:

ELISA:1:2000-1:10000, WB:1:500-1:1000,
IF:1:100-1:200

Protein Background:**Gene ID:**

ERBB2

Uniprot

P04626

Synonyms:

C-erbB-2; ErbB2;

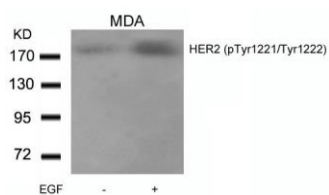
Immunogen:

Peptide sequence around phosphorylation site of tyrosine1221/1222 (N-L-Y(p)-Y(p)-W) derived from Human HER2.

Storage:

Supplied at 1.0mg/mL in phosphate buffered saline (without Mg²⁺ and Ca²⁺), pH 7.4, 150mM NaCl, 0.02% sodium azide and 50% glycerol.

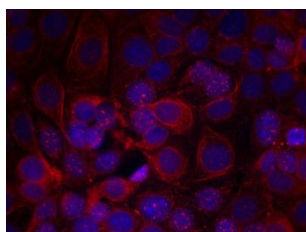
Product Images



Western blot analysis of extracts from MDA cells untreated or treated with EGF using HER2(Phospho-Tyr1221/Tyr1222) Antibody.



Western blot analysis of extracts from HeLa cells, treated with EGF or calf intestinal phosphatase (CIP), using HER2 (Phospho-Tyr1221/Tyr1222) Antibody.



Immunofluorescence staining of methanol-fixed MCF cells using HER2(Phospho-Tyr1221/Tyr1222) Antibody.