

# Phospho-STK39 (Ser311) Antibody



PACO24396

---

## Product Information

**Size:**

100ul

**Reactivity:**

Human, Mouse, Rat

**Source:**

Rabbit

**Isotype:**

IgG

**Applications:**

ELISA, WB, IHC

**Recommended dilutions:**

ELISA:1:2000-1:10000, WB:1:500-1:1000,  
IHC:1:50-1:100

**Protein Background:****Gene ID:**

STK39

**Uniprot**

Q9UEW8

**Synonyms:**

DCHT; STK39; SPAK;

**Immunogen:**

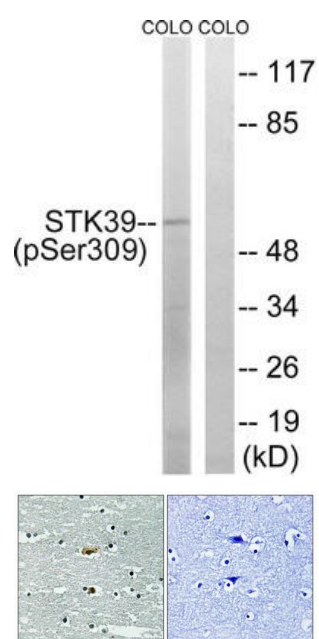
Peptide sequence around phosphorylation site of Serine 311(S-F-R(p)-K-L) derived from Human STK39.

**Storage:**

Rabbit IgG in phosphate buffered saline (without Mg<sup>2+</sup> and Ca<sup>2+</sup>), pH 7.4, 150mM NaCl, 0.02% sodium azide and 50% glycerol.

## Product Images

---



Western blot analysis of extracts from COLO cells using STK39 (Phospho-Ser309) Antibody. The lane on the right is treated with the antigen-specific peptide.

Immunohistochemical analysis of paraffin-embedded human brain tissue using STK39 (Phospho-Ser309) antibody (left) or the same antibody preincubated with blocking peptide (right).