

Phospho-RAF1 (Tyr341) Antibody



PACO24373

Product Information

Size:

100ul

Reactivity:

Human, Mouse, Rat

Source:

Rabbit

Isotype:

IgG

Applications:

ELISA, WB, IHC

Recommended dilutions:

ELISA:1:2000-1:10000, WB:1:500-1:1000,
IHC:1:50-1:100

Protein Background:**Gene ID:**

RAF1

Uniprot

P04049

Synonyms:

C-RAF; C-Raf; CRAF; RAF-1;

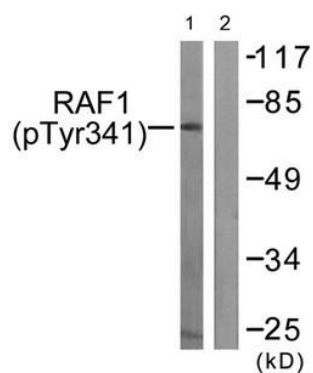
Immunogen:

Peptide sequence around phosphorylation site of tyrosine 341 (S-Y-Y(p)-W-E) derived from Human C-RAF.

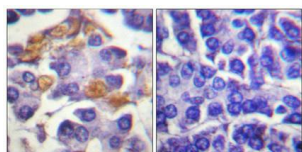
Storage:

Rabbit IgG in phosphate buffered saline (without Mg²⁺ and Ca²⁺), pH 7.4, 150mM NaCl, 0.02% sodium azide and 50% glycerol.

Product Images



Western blot analysis of extracts from Jurkat cells treated with Paclitaxel using Raf1 (Phospho-Tyr341) Antibody. The lane on the right is treated with the antigen-specific peptide.



Immunohistochemical analysis of paraffin-embedded human pancreas tissue using Raf1 (Phospho-Tyr341) antibody (left) or the same antibody preincubated with blocking peptide (right).