

Phospho-Syn1 (Ser549) Antibody



PACO24349

Product Information

Size:

100ul

Reactivity:

Human, Rat, Mouse

Source:

Rabbit

Isotype:

IgG

Applications:

ELISA, WB

Recommended dilutions:

ELISA:1:2000-1:10000, WB:1:500-1:1000

Protein Background:**Gene ID:**

Syn1

Uniprot

O88935

Synonyms:

Syn-1; synapsin I;

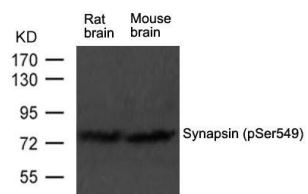
Immunogen:

Peptide sequence around phosphorylation site of serine 549(P-A-S(p)-P-S) derived from Rat Synapsin.

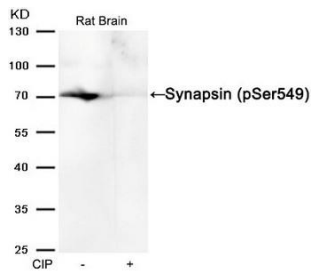
Storage:

Supplied at 1.0mg/mL in phosphate buffered saline (without Mg²⁺ and Ca²⁺), pH 7.4, 150mM NaCl, 0.02% sodium azide and 50% glycerol.

Product Images



Western blot analysis of extract from rat brain and mouse brain tissue using Synapsin(phospho-Ser549) Antibody using.



Western blot analysis of extracts from Rat brain tissue or calf intestinal phosphatase (CIP), using Synapsin (phospho-Ser549) Antibody.