

# Phospho-Cdc25b (Ser149) Antibody



PACO24346

---

## Product Information

**Size:**

100ul

**Reactivity:**

Mouse, Rat

**Source:**

Rabbit

**Isotype:**

IgG

**Applications:**

ELISA, WB

**Recommended dilutions:**

ELISA:1:2000-1:10000, WB:1:500-1:1000

**Protein Background:****Gene ID:**

Cdc25b

**Uniprot**

Q9DBN8

**Synonyms:**

CDC25B

**Immunogen:**

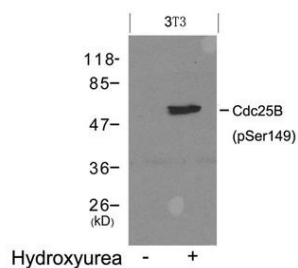
Peptide sequence around phosphorylation site of Serine 149 (F-R-S(p)-L-P) derived from Mouse Cdc25B.

**Storage:**

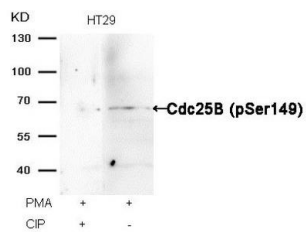
Supplied at 1.0mg/mL in phosphate buffered saline (without Mg<sup>2+</sup> and Ca<sup>2+</sup>), pH 7.4, 150mM NaCl, 0.02% sodium azide and 50% glycerol.

## Product Images

---



Western blot analysis of extracts from 3T3 cells untreated (lane 1) or treated with Hydroxyurea (lane 2) using Cdc25B (Phospho-Ser149) Antibody.



Western blot analysis of extracts from HT29 cells, treated with PMA or calf intestinal phosphatase (CIP), using Cdc25B (Phospho-Ser149) Antibody.