

Phospho-CREB1 (Ser129) Antibody



PACO24319

Product Information

Size:

100ul

Reactivity:

Human, Mouse, Rat

Source:

Rabbit

Isotype:

IgG

Applications:

ELISA, WB, IHC

Recommended dilutions:

ELISA:1:2000-1:10000, WB:1:500-1:1000,
IHC:1:50-1:100

Protein Background:

This protein binds the cAMP response element (CRE), a sequence present in many viral and cellular promoters. CREB stimulates transcription on binding to the CRE.

Transcription activation is enhanced by the TORC coactivators which act independently of Ser-133 phosphorylation. Implicated in synchronization of circadian rhythmicity.

Gene ID:

CREB1

Uniprot

P16220

Synonyms:

CREB-1; CREB1;

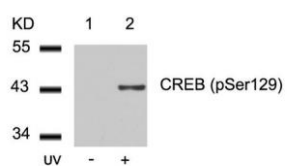
Immunogen:

Peptide sequence around phosphorylation site of serine 129 (I-L-S(p)-R-R) derived from Human CREB.

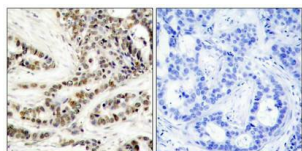
Storage:

Supplied at 1.0mg/mL in phosphate buffered saline (without Mg²⁺ and Ca²⁺), pH 7.4, 150mM NaCl, 0.02% sodium azide and 50% glycerol.

Product Images



Western blot analysis of extracts from 293 cells untreated (lane 1) or treated with UV (lane 2) using CREB (Phospho-Ser129) Antibody.



Immunohistochemical analysis of paraffin-embedded human breast carcinoma tissue using CREB (Phospho-Ser129) Antibody (left) or the same antibody preincubated with blocking peptide (right).