

Phospho-SNCA (Tyr125) Antibody



PACO24314

Product Information

Size:

100ul

Reactivity:

Human

Source:

Rabbit

Isotype:

IgG

Applications:

ELISA, WB, IF

Recommended dilutions:

ELISA:1:2000-1:10000, WB:1:500-1:1000,
IF:1:100-1:200

Protein Background:**Gene ID:**

SNCA

Uniprot

P37840

Synonyms:

NACP; SYN; SYUA; alpha-synuclein;

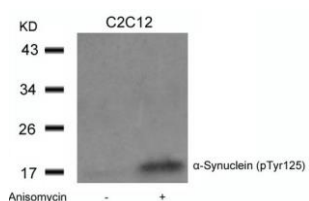
Immunogen:

Peptide sequence around phosphorylation site of tyrosine 125 (E-A-Y(p)-E-M) derived from Human α -Synuclein.

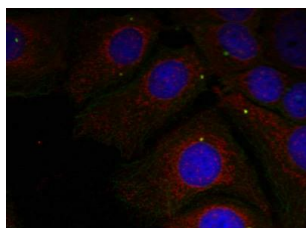
Storage:

Supplied at 1.0mg/mL in phosphate buffered saline (without Mg²⁺ and Ca²⁺), pH 7.4, 150mM NaCl, 0.02% sodium azide and 50% glycerol.

Product Images



Western blot analysis of extracts from C2C12 cells untreated or treated with Anisomycin using α -Synuclein(Phospho-Tyr125) Antibody.



Immunofluorescence staining of methanol-fixed Hela cells using α -Synuclein(Phospho-Tyr125) Antibody.