

Phospho-IRS1 (Ser639) Antibody



PACO24309

Product Information

Size:

100ul

Reactivity:

Human, Mouse, Rat

Source:

Rabbit

Isotype:

IgG

Applications:

ELISA, WB, IHC

Recommended dilutions:

ELISA:1:2000-1:10000, WB:1:500-1:1000,
IHC:1:50-1:100

Protein Background:

May mediate the control of various cellular processes by insulin. When phosphorylated by the insulin receptor binds specifically to various cellular proteins containing SH2 domains such as phosphatidylinositol 3-kinase p85 subunit or GRB2. Activates phosphatidylinositol 3-kinase when bound to the regulatory p85 subunit.

Gene ID:

IRS1

Uniprot

P35568

Synonyms:

IRS-1; IRS1;

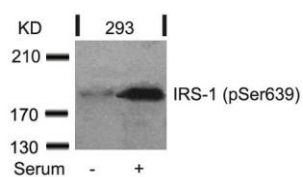
Immunogen:

Peptide sequence around phosphorylation site of serine 639 (P-K-S(p)-V-S) derived from Human IRS-1.

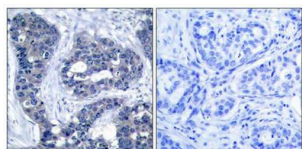
Storage:

Supplied at 1.0mg/mL in phosphate buffered saline (without Mg²⁺ and Ca²⁺), pH 7.4, 150mM NaCl, 0.02% sodium azide and 50% glycerol.

Product Images



Western blot analysis of extracts from 293 cells untreated or treated with serum using IRS-1(Phospho-Ser639) Antibody.



Immunohistochemical analysis of paraffin-embedded human breast carcinoma tissue using IRS-1(Phospho-Ser639) Antibody(left) or the same antibody preincubated with blocking peptide(right).