

**Phospho-PAK1/PAK2/PAK3
(Thr423/Thr402/Thr421) Antibody
PACO24283**



Product Information

Size:

100ul

Reactivity:

Human, Mouse, Rat

Source:

Rabbit

Isotype:

IgG

Applications:

ELISA, IHC, IF

Recommended dilutions:

ELISA:1:2000-1:10000, IHC:1:50-1:100,
IF:1:100-1:200

Protein Background:

Gene ID:

PAK1/PAK2/PAK3

Uniprot

Q13153/Q13177/O75914

Synonyms:

p21-activated kinase 1; PAK-1; p65-PAK; Alpha-PAK;

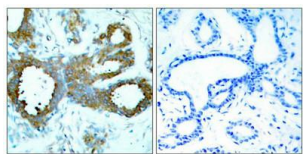
Immunogen:

Peptide sequence around phosphorylation site of threonine 423 /402/421 (R-S-T(p)-M-V) derived from Human PAK1/PAK2/PAK3.

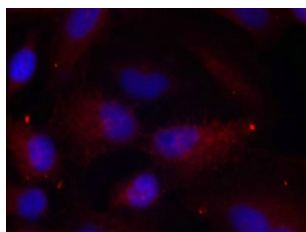
Storage:

Supplied at 1.0mg/mL in phosphate buffered saline (without Mg²⁺ and Ca²⁺), pH 7.4, 150mM NaCl, 0.02% sodium azide and 50% glycerol.

Product Images



Immunohistochemical analysis of paraffin-embedded human breast carcinoma tissue using PAK1/PAK2/PAK3(Phospho-Thr423/Thr402/Thr421) Antibody(left) or the same antibody preincubated with blocking peptide(right).



Immunofluorescence staining of methanol-fixed HeLa cells using PAK1/PAK2/PAK3(Phospho-Thr423/Thr402/Thr421) Antibody.