

Phospho-CREB1 (Ser133) Antibody



PACO24243

Product Information

Size:

100ul

Reactivity:

Human, Mouse, Rat

Source:

Rabbit

Isotype:

IgG

Applications:

ELISA, WB, IHC

Recommended dilutions:

ELISA:1:2000-1:10000, WB:1:500-1:1000,
IHC:1:50-1:100

Protein Background:**Gene ID:**

CREB1

Uniprot

P16220

Synonyms:

CREB-1; CREB1;

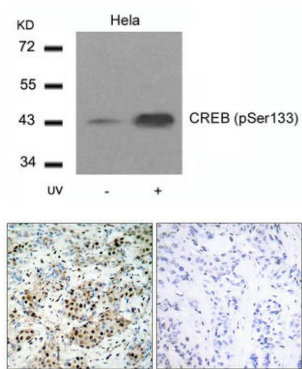
Immunogen:

Peptide sequence around phosphorylation site of serine 133 (R-P-S(p)-Y-R) derived from Human CREB.

Storage:

Supplied at 1.0mg/mL in phosphate buffered saline (without Mg²⁺ and Ca²⁺), pH 7.4, 150mM NaCl, 0.02% sodium azide and 50% glycerol.

Product Images



Western blot analysis of extracts from HeLa cells untreated or treated with UV using CREB(Phospho-Ser133) Antibody.

Immunohistochemical analysis of paraffin-embedded human breast carcinoma tissue using CREB(Phospho-Ser133) Antibody(left) or the same antibody preincubated with blocking peptide(right).