

Phospho-JUNB (Ser259) Antibody



PACO24228

Product Information

Size:

100ul

Reactivity:

Human, Mouse, Rat

Source:

Rabbit

Isotype:

IgG

Applications:

ELISA, WB, IHC

Recommended dilutions:

ELISA:1:2000-1:10000, WB:1:500-1:1000,
IHC:1:50-1:100

Protein Background:

Transcription factor involved in regulating gene activity following the primary growth factor response. Binds to the DNA sequence 5'-TGA[CG]TCA-3'.

Gene ID:

JUNB

Uniprot

P17275

Synonyms:

AP-1

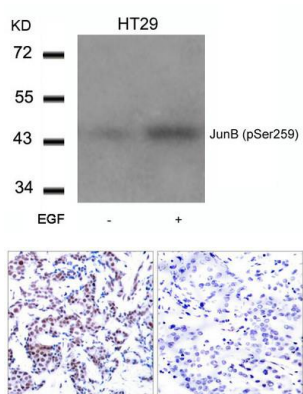
Immunogen:

Peptide sequence around phosphorylation site of serine 259 (P-V-S(p)-P-I) derived from Human JunB.

Storage:

Supplied at 1.0mg/mL in phosphate buffered saline (without Mg²⁺ and Ca²⁺), pH 7.4, 150mM NaCl, 0.02% sodium azide and 50% glycerol.

Product Images



Western blot analysis of extracts from HT29 cells untreated or treated with EGF using JunB(Phospho-Ser259) Antibody.

Immunohistochemical analysis of paraffin-embedded human breast carcinoma tissue using JunB(Phospho-Ser259) Antibody(left) or the same antibody preincubated with blocking peptide(right).