

# Phospho-BRCA2 (Ser3291) Antibody



PACO24182

---

## Product Information

**Size:**

100ul

**Reactivity:**

Human, Mouse, Rat

**Source:**

Rabbit

**Isotype:**

IgG

**Applications:**

ELISA, WB

**Recommended dilutions:**

ELISA:1:2000-1:10000, WB:1:500-1:1000

**Protein Background:****Gene ID:**

BRCA2

**Uniprot**

P51587

**Synonyms:**

BRCC2; BRCA2; subunit 2; BRCA1/BRCA2-containing complex;

**Immunogen:**

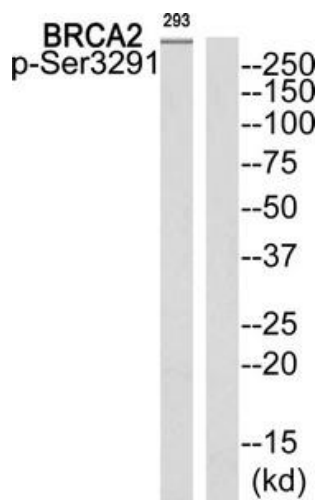
Peptide sequence around phosphorylation site of Serine 3291 (F-V-S(p)-P-A) derived from Human BRCA2.

**Storage:**

Rabbit IgG in phosphate buffered saline (without Mg<sup>2+</sup> and Ca<sup>2+</sup>), pH 7.4, 150mM NaCl, 0.02% sodium azide and 50% glycerol.

## Product Images

---



Western blot analysis of extracts from 293 cells using BRCA2 (Phospho-Ser3291) Antibody. The lane on the right is treated with the antigen-specific peptide.