

Phospho-STK39 (Ser325) Antibody



PACO24122

Product Information

Size:

100ul

Reactivity:

Human, Mouse, Rat

Source:

Rabbit

Isotype:

IgG

Applications:

ELISA, IHC

Recommended dilutions:

ELISA:1:2000-1:10000, IHC:1:50-1:100

Protein Background:**Gene ID:**

STK39

Uniprot

Q9UEW8

Synonyms:

DCHT; STK39; SPAK;

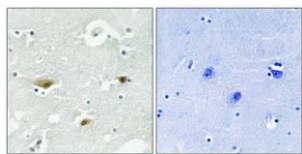
Immunogen:

Peptide sequence around phosphorylation site of Serine 325(S-K-R(p)-R-T) derived from Human STK39.

Storage:

Rabbit IgG in phosphate buffered saline (without Mg²⁺ and Ca²⁺), pH 7.4, 150mM NaCl, 0.02% sodium azide and 50% glycerol.

Product Images



Immunohistochemical analysis of paraffin-embedded human brain tissue using STK39 (Phospho-Ser323) antibody (left) or the same antibody preincubated with blocking peptide (right).