

# Phospho-HSF1 (Thr142) Antibody



PACO24102

---

## Product Information

**Size:**

100ul

**Reactivity:**

Human, Mouse

**Source:**

Rabbit

**Isotype:**

IgG

**Applications:**

ELISA, IHC

**Recommended dilutions:**

ELISA:1:2000-1:10000, IHC:1:50-1:100

**Protein Background:****Gene ID:**

HSF1

**Uniprot**

Q00613

**Synonyms:**

HSF 1; HSTF1; Heat shock factor protein 1;

**Immunogen:**

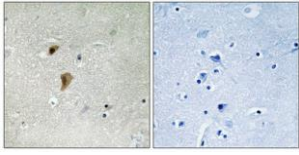
Peptide sequence around phosphorylation site of threonine 142(L-L-T(p)-D-V) derived from Human HSF1.

**Storage:**

Rabbit IgG in phosphate buffered saline (without Mg<sup>2+</sup> and Ca<sup>2+</sup>), pH 7.4, 150mM NaCl, 0.02% sodium azide and 50% glycerol.

## Product Images

---



Immunohistochemical analysis of paraffin-embedded human brain tissue using HSF1 (Phospho-Thr142) antibody (left) or the same antibody preincubated with blocking peptide (right).