

Phospho-CCR5 (Ser349) Antibody



PACO24085

Product Information

Size:

100ul

Reactivity:

Human

Source:

Rabbit

Isotype:

IgG

Applications:

ELISA, WB

Recommended dilutions:

ELISA:1:2000-1:10000, WB:1:500-1:1000

Protein Background:**Gene ID:**

CCR5

Uniprot

P51681

Synonyms:

C-C CKR-5; CKR5; CHEMR13; CMKBR5; CCR-5

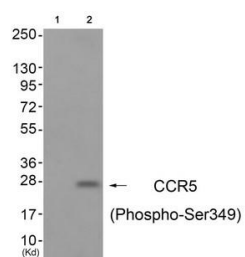
Immunogen:

Peptide sequence around phosphorylation site of Serine 349 (E-I-S(p)-V-G) derived from Human CCR5.

Storage:

Rabbit IgG in phosphate buffered saline (without Mg²⁺ and Ca²⁺), pH 7.4, 150mM NaCl, 0.02% sodium azide and 50% glycerol.

Product Images



Western blot analysis of extracts from A549 cells (Lane 2), using CCR5 (Phospho-Ser349) Antibody. The lane on the left is treated with antigen-specific peptide.