

Phospho-STK11 (Ser428) Antibody



PACO24066

Product Information

Size:

100ul

Reactivity:

Human, Mouse

Source:

Rabbit

Isotype:

IgG

Applications:

ELISA, WB

Recommended dilutions:

ELISA:1:2000-1:10000, WB:1:500-1:1000

Protein Background:**Gene ID:**

STK11

Uniprot

Q15831

Synonyms:

Protein kinase; CAMK group; CAMKL family; LKB subfamily;

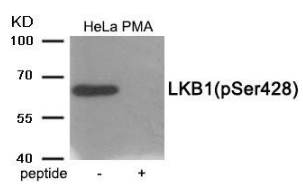
Immunogen:

Peptide sequence around phosphorylation site of serine428 (R-L-S(p)-A-C) derived from Human LKB1.

Storage:

Rabbit IgG in phosphate buffered saline (without Mg²⁺ and Ca²⁺), pH 7.4, 150mM NaCl, 0.02% sodium azide and 50% glycerol.

Product Images



Western blot analysis of extracts from HeLa cells treated with PMA using Phospho-LKB1 (Ser428) antibody. The lane on the right is treated with the antigen-specific peptide.