

# Phospho-TK1 (Ser13) Antibody



PACO23947

---

## Product Information

**Size:**

100ul

**Reactivity:**

Human, Mouse, Rat, Monkey

**Source:**

Rabbit

**Isotype:**

IgG

**Applications:**

ELISA, WB

**Recommended dilutions:**

ELISA:1:2000-1:10000, WB:1:500-1:1000

**Protein Background:****Gene ID:**

TK1

**Uniprot**

P04183

**Synonyms:**

TK2

**Immunogen:**

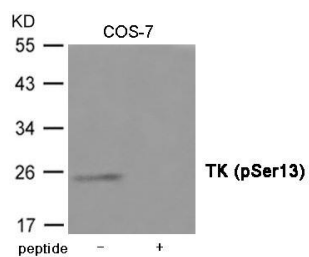
Peptide sequence around phosphorylation site of Serine 13(P-G-S(p)-P-S) derived from Human TK.

**Storage:**

Supplied at 1.0mg/mL in phosphate buffered saline (without Mg<sup>2+</sup> and Ca<sup>2+</sup>), pH 7.4, 150mM NaCl, 0.02% sodium azide and 50% glycerol.

## Product Images

---



Western blot analysis of extracts from COS-7 cells using TK (Phospho-Ser13) Antibody. The lane on the right is treated with the antigen-specific peptide.