

Phospho-RUNX1 (Ser303) Antibody



PACO23926

Product Information

Size:

100ul

Reactivity:

Human, Mouse, Rat

Source:

Rabbit

Isotype:

IgG

Applications:

ELISA, WB

Recommended dilutions:

ELISA:1:2000-1:10000, WB:1:500-1:1000

Protein Background:

CBF binds to the core site, 5'-PYGPYGGT-3', of a number of enhancers and promoters, including murine leukemia virus, polyomavirus enhancer, T-cell receptor enhancers, LCK, IL-3 and GM-CSF promoters. The alpha subunit binds DNA and appears to have a role in the development of normal hematopoiesis. Isoform AML-1L interferes with the transactivation activity of RUNX1. Acts synergistically with ELF4 to transactivate the IL-3 promoter and with ELF2 to transactivate the mouse BLK promoter. Inhibits KAT6B-dependent transcriptional activation.

Gene ID:

RUNX1

Uniprot

Q01196

Synonyms:

CBFA2, EVI-1, AMLCR1, PEBP2aB, AML1-EVI-1

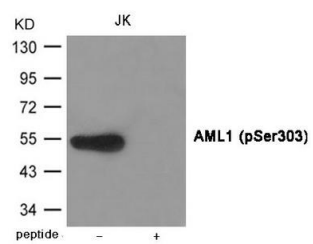
Immunogen:

Peptide sequence around phosphorylation site of serine 303(T-A-F(p)-S-D) derived from Human AML1.

Storage:

Supplied at 1.0mg/mL in phosphate buffered saline (without Mg²⁺ and Ca²⁺), pH 7.4, 150mM NaCl, 0.02% sodium azide and 50% glycerol.

Product Images



Western blot analysis of extracts from JK cells using AML1 (Phospho-Ser303) Antibody. The lane on the right is treated with the antigen-specific peptide.