

# Phospho-RUNX1 (Ser276) Antibody



PACO23925

---

## Product Information

**Size:**

100ul

**Reactivity:**

Human, Mouse, Rat

**Source:**

Rabbit

**Isotype:**

IgG

**Applications:**

ELISA, WB

**Recommended dilutions:**

ELISA:1:2000-1:10000, WB:1:500-1:1000

**Protein Background:**

CBF binds to the core site, 5'-PYGPYGGT-3', of a number of enhancers and promoters, including murine leukemia virus, polyomavirus enhancer, T-cell receptor enhancers, LCK, IL-3 and GM-CSF promoters. The alpha subunit binds DNA and appears to have a role in the development of normal hematopoiesis. Isoform AML-1L interferes with the transactivation activity of RUNX1. Acts synergistically with ELF4 to transactivate the IL-3 promoter and with ELF2 to transactivate the mouse BLK promoter. Inhibits KAT6B-dependent transcriptional activation.

**Gene ID:**

RUNX1

**Uniprot**

Q01196

**Synonyms:**

CBFA2, EVI-1, AMLCR1, PEBP2aB, AML1-EVI-1

**Immunogen:**

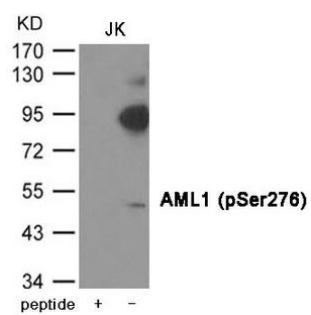
Peptide sequence around phosphorylation site of serine 276(P-I-S(p)-P-G) derived from Human AML1.

**Storage:**

Supplied at 1.0mg/mL in phosphate buffered saline (without Mg<sup>2+</sup> and Ca<sup>2+</sup>), pH 7.4, 150mM NaCl, 0.02% sodium azide and 50% glycerol.

## Product Images

---



Western blot analysis of extracts from JK cells using AML1 (Phospho-Ser276) Antibody. The lane on the left is treated with the antigen-specific peptide.