

Phospho-Map2k5 (Ser311/Thr315) Antibody



PACO23912

Product Information

Size:

100ul

Reactivity:

Human, Mouse, Rat

Source:

Rabbit

Isotype:

IgG

Applications:

ELISA, WB

Recommended dilutions:

ELISA:1:2000-1:10000, WB:1:500-1:1000

Protein Background:

Acts as a scaffold for the formation of a ternary MAP3K2/MAP3K3-MAP3K5-MAPK7 signaling complex. Activation of this pathway appear to play a critical role in protecting cells from stress-induced apoptosis, neuronal survival and cardiac development and angiogenesis.

Gene ID:

Map2k5

Uniprot

Q62862

Synonyms:

Map2k5

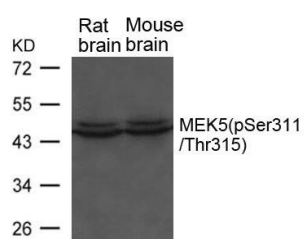
Immunogen:

Peptide sequence around phosphorylation site of Serine 311 and threonine 315 (V-N-S(p)I-A-K-T(p)-Y-V) derived from Rat MEK5.

Storage:

Supplied at 1.0mg/mL in phosphate buffered saline (without Mg²⁺ and Ca²⁺), pH 7.4, 150mM NaCl, 0.02% sodium azide and 50% glycerol.

Product Images



Western blot analysis of extracts from Rat and Mouse brain tissue using MEK5(phospho-Ser311/ Thr315) Antibody.