

Phospho-MAPT (Ser416) Antibody



PACO23910

Product Information

Size:

100ul

Reactivity:

Human, Rat, Mouse

Source:

Rabbit

Isotype:

IgG

Applications:

ELISA, WB

Recommended dilutions:

ELISA:1:2000-1:10000, WB:1:500-1:1000

Protein Background:**Gene ID:**

MAPT

Uniprot

P10636

Synonyms:

MAPT; MTAPT; MTBT1; Neurofibrillary tangle protein; PHF-tau

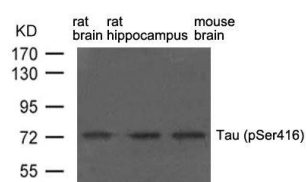
Immunogen:

Peptide sequence around phosphorylation site of serine 416 (T-G-S(p)-I-D) derived from Human Tau.

Storage:

Supplied at 1.0mg/mL in phosphate buffered saline (without Mg²⁺ and Ca²⁺), pH 7.4, 150mM NaCl, 0.02% sodium azide and 50% glycerol.

Product Images



Western blot analysis of extract from rat brain, rat hippocampus and mouse brain using Tau(phospho-Ser416) Antibody.